



THE JAGA HUB

JEWEL OF AGRICULTURE AND GENERATING AUXILIARY OF ALBAY



UNIVERSITY OF SANTO TOMAS
COLLEGE OF ARCHITECTURE

AMON, ABRAM VINCENT
DE ALBAN, JOSEFIN JUBILEE P. III
KONG, AARON WESLEY L.
RETUBA, GETHRY M.

4AR-1





PROJECT BRIEF

LEGAZPI ALBAY IS KNOWN FOR ITS AGRICULTURE AND COASTLINES. THEY ARE KNOWN TO USE ALTERNATIVE RENEWABLE RESOURCES AS WELL AS TAKE ADVANTAGE OF THEIR RICH MARINE BIODIVERSITY.

THE SITE IS LOCATED ALONG THE COASTLINES OF THE ALBAY GULF. THE SITE IS LOCATED ALONG THE COASTLINES WHICH HINDERS DEVELOPMENT WITHIN THE AREA. IT ALSO HAS A LOT OF INFORMAL SETTLERS MAKING THEM VULNERABLE TO NATURAL DISASTERS.

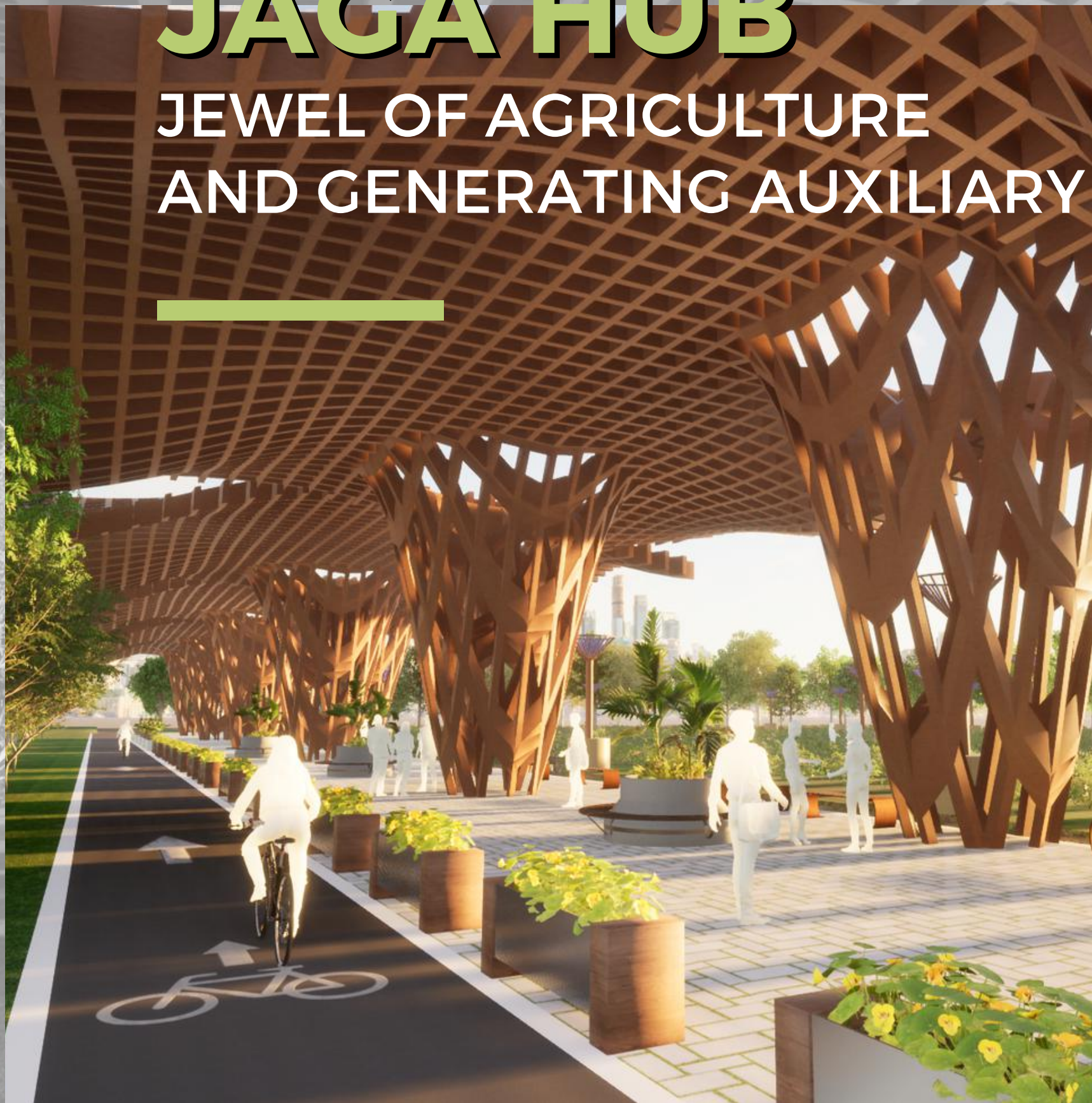
PROBLEM

THE SITE POSES A THREAT TO THE COMMERCIAL ECONOMIC GROWTH DUE TO HAZARDOUS EFFECTS OF THE SITE SUCH AS FLOODING. THIS IS EVIDENT ON THE "EMBARACADERO DE LEGAZPI", A MALL FOUND NEAR THE COASTLINE ALONG THE LEGAZPI PORT WHICH HAS NOT BEEN DOING WELL DUE TO CONSTANT FLOODING OF THE SITE.



JAGA HUB

JEWEL OF AGRICULTURE
AND GENERATING AUXILIARY



JAGA

"TO GUARD OR SENTINEL"

PROTECTION

DESIGNED TO PROTECT THE CITY FROM
FLOODING.

ECONOMIC GROWTH

DESIGNED TO COLLECT THE POWER OF
NATURE THROUGH THE USE OF ENERGY
HARVESTING SOLUTIONS

SUSTAINABILITY

DESIGNED TO MAXIMIZE THE
SURROUNDING NATURE AND RIVERS
AROUND THE CITY FOR THE NEXT
GENERATION AND SELF SUSTAINABLE
CITY FOR THE FUTURE

WHAT IS THE —MAIN PURPOSE OF JAGA HUB?



PRESERVE

DEVELOP A HUB WHICH
PRIORITIZES THE SAFETY OF ITS
RESIDENTS, USING MANGROVES



INNOVATE

PROVIDING A CONSISTENT WATER
SUPPLY



RECREATE

IMPROVE THE SOCIAL LIVELIHOOD
EXPERIENCE OF THE PEOPLE OF
LEGAZPI

AGRICULTURAL SOLUTIONS FOR INNOVATION

BIKE LANE

THE BIKE LANES AROUND THE HUB ARE DESIGNED TO COPE WITH THE SURROUNDING FACILITIES. IT CREATES AN ILLUSION TO COVER THE WATER TREATMENT PLANT.

AQUAPONICS FARMING

THE FACILITY AIMS TO INTEGRATE THE GROWTH OF CROPS WITH THE NUTRITION THEY GET FROM THE FISH THROUGH AQUACULTURE.



AGRICULTURAL SOLUTIONS FOR INNOVATION

SOYBEAN PLANTATION

THIS PLANTATION IS HIGHLY ENCOURAGED TO BOOST THE LOCAL PRODUCTIONS OF SOYBEANS.



GRAND WALKWAY

THE SOYBEAN PLANTATION IS INTEGRATED WITH A GRAND WELCOMING SHED WITH BIKE LANES AND SIDEWALKS, WHERE PEOPLE COULD SEE THE PANORAMIC BEAUTY OF PLANTATION.

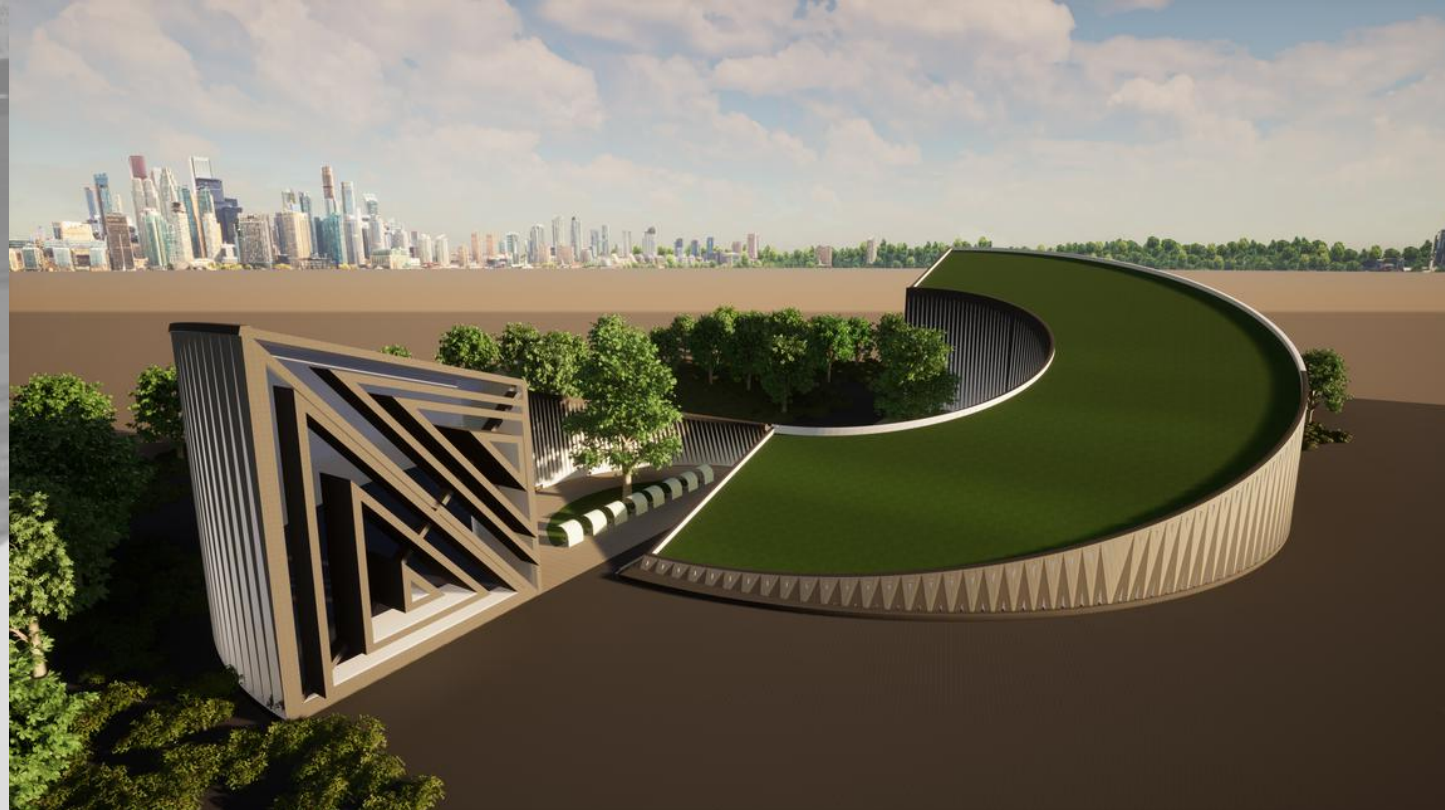
FARMING INNOVATION SHOWCASE AREA

THIS AREA SERVES AS A SOLUTION TO PROMOTE AGRICULTURAL INNOVATIONS BY SHOWCASING THE PROCESSES OF METHODS SUCH AS VERTICAL FARMING AND AQUAPONICS AND AT THE SAME TIME GIVING CONSIDERATION TO RECREATION THROUGH BIKELANES AND PEDESTRIAN CENTERED WALKWAYS



MANGROVES

SERVES AS A STORM BUFFER AS WELL AS PROTECTION AGAINST FLOODS ALONG THE SHORELINE DUE TO IT BEING CONSIDERED AS A DANGER ZONE



AGORA

THIS SERVES AS A PLACE WHERE THE FARMERS CAN SELL THEIR FRESH PRODUCE AND SERVE AS A RETURN OF INVESTMENT FOR THE HUB

DISASTER RISK REDUCTION COMPOUND

DEVELOP A COMPOUND WHERE THE AFFECTED RESIDENTS CAN STAY AFTER A NATURAL DISASTER.

HOUSING PROJECT

JAGA RELOCATION PROTOTYPE





RELOCATED HOUSING

FOCUSES ON BEING ABLE TO PROVIDE A NEW RELOCATION SITE FOR THE INFORMAL SETTLERS WHICH CONSIDERS BOTH THE SAFETY AND COMFORT OF THE RESIDENTS.

THE END

