

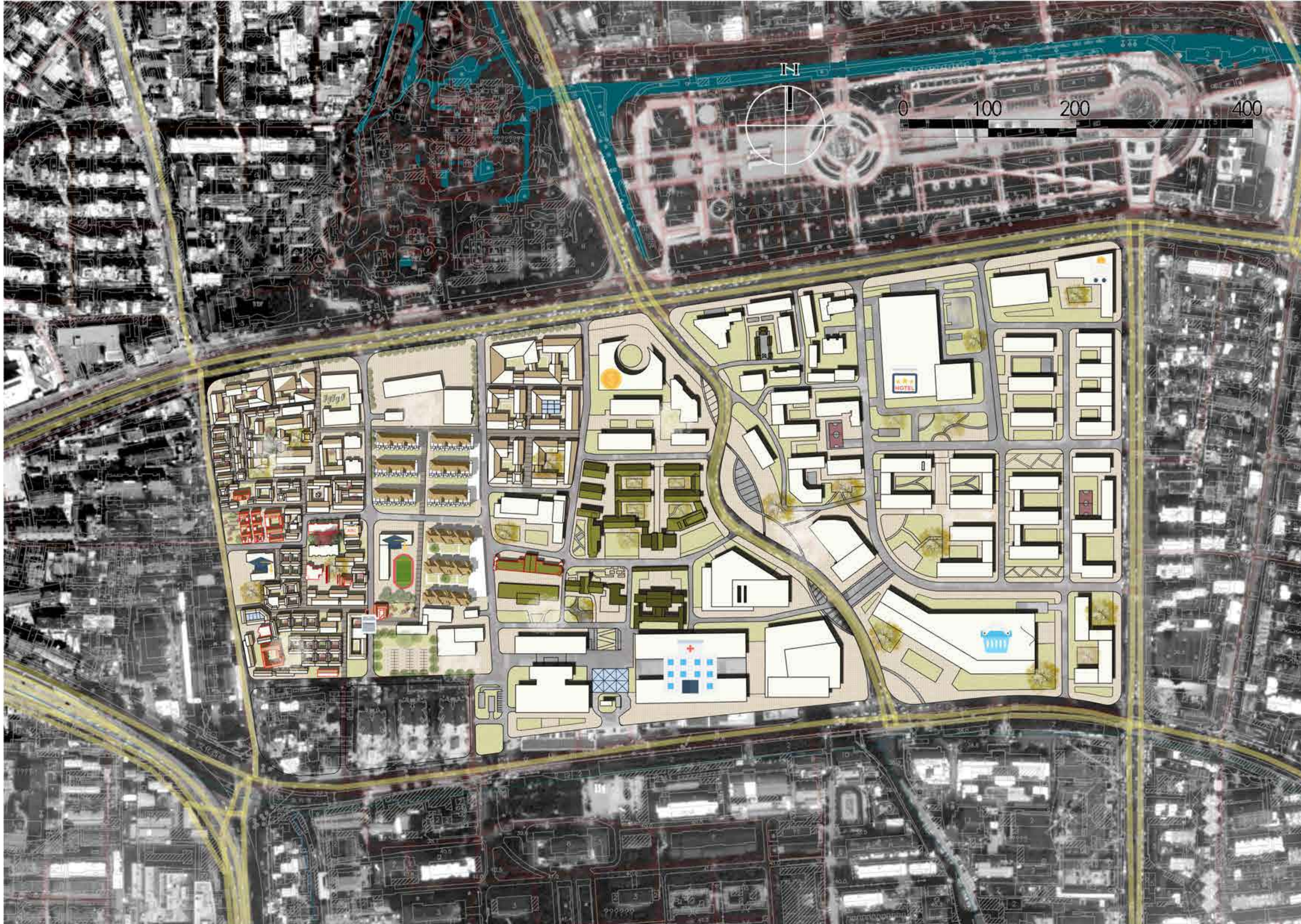
Co-construction, Co-governance, Co-sharing
Healthy Community Design

■ Aerial View

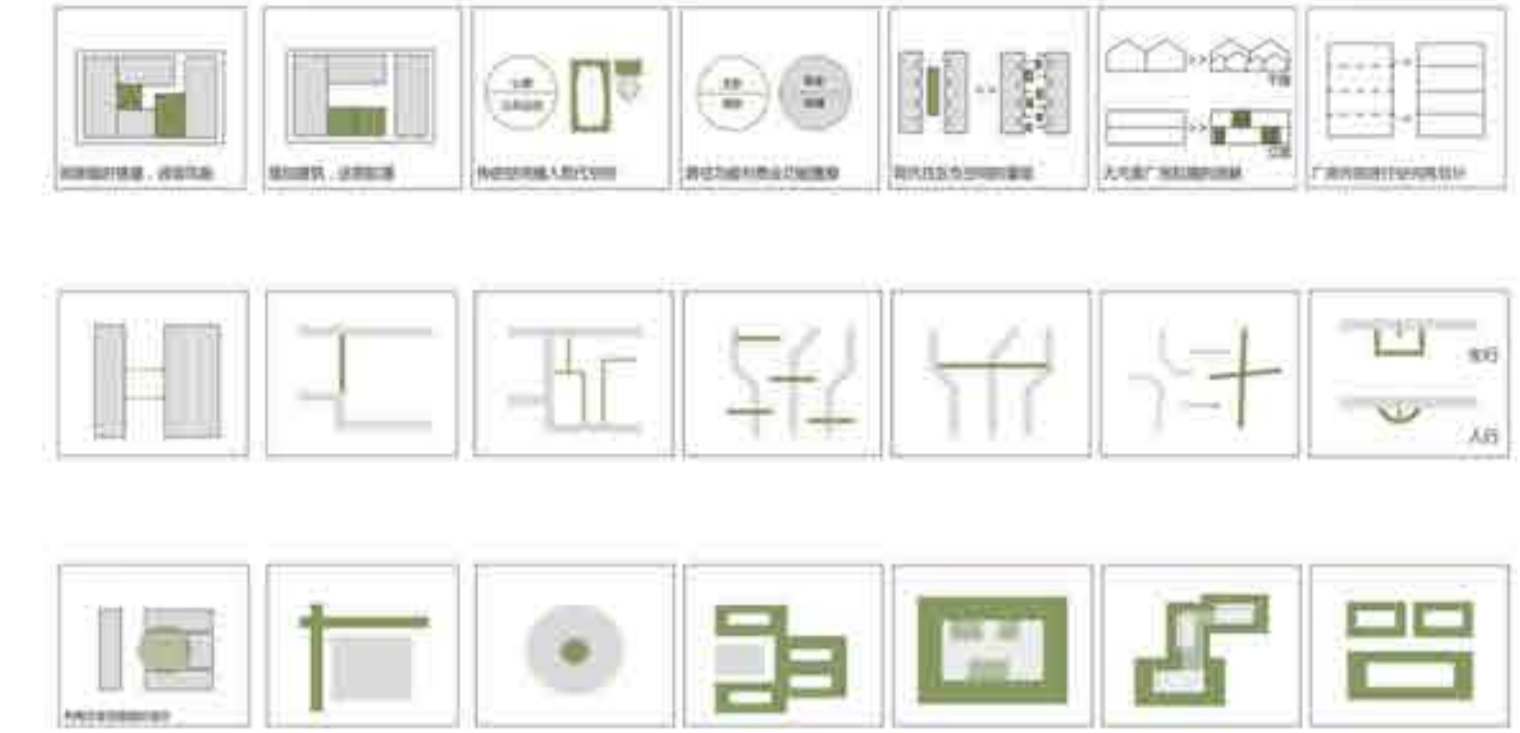


Co-construction, Co-governance, Co-sharing Healthy Community Design

■ General Layout



■ "Space Gene"



■ Planning Means

Smart technologies help China combat COVID-19 via promoting city resilience

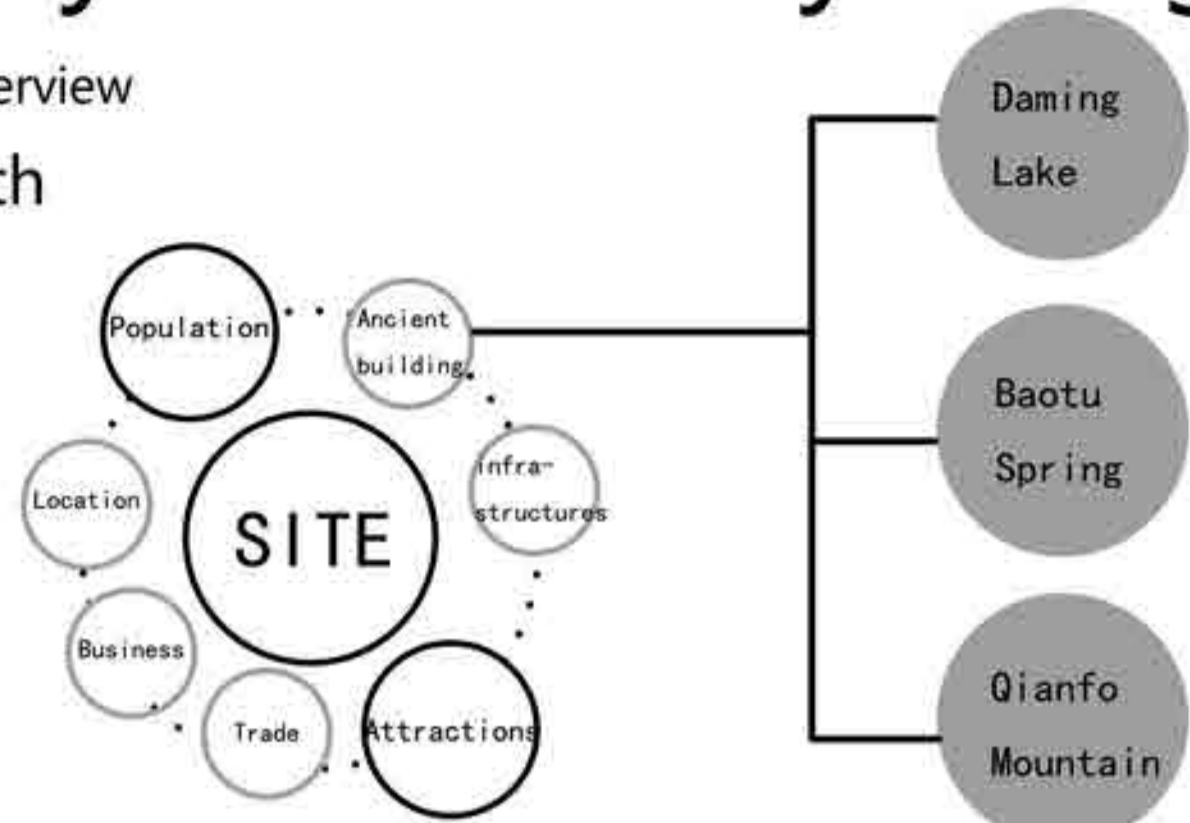


Co-construction, Co-governance, Co-sharing

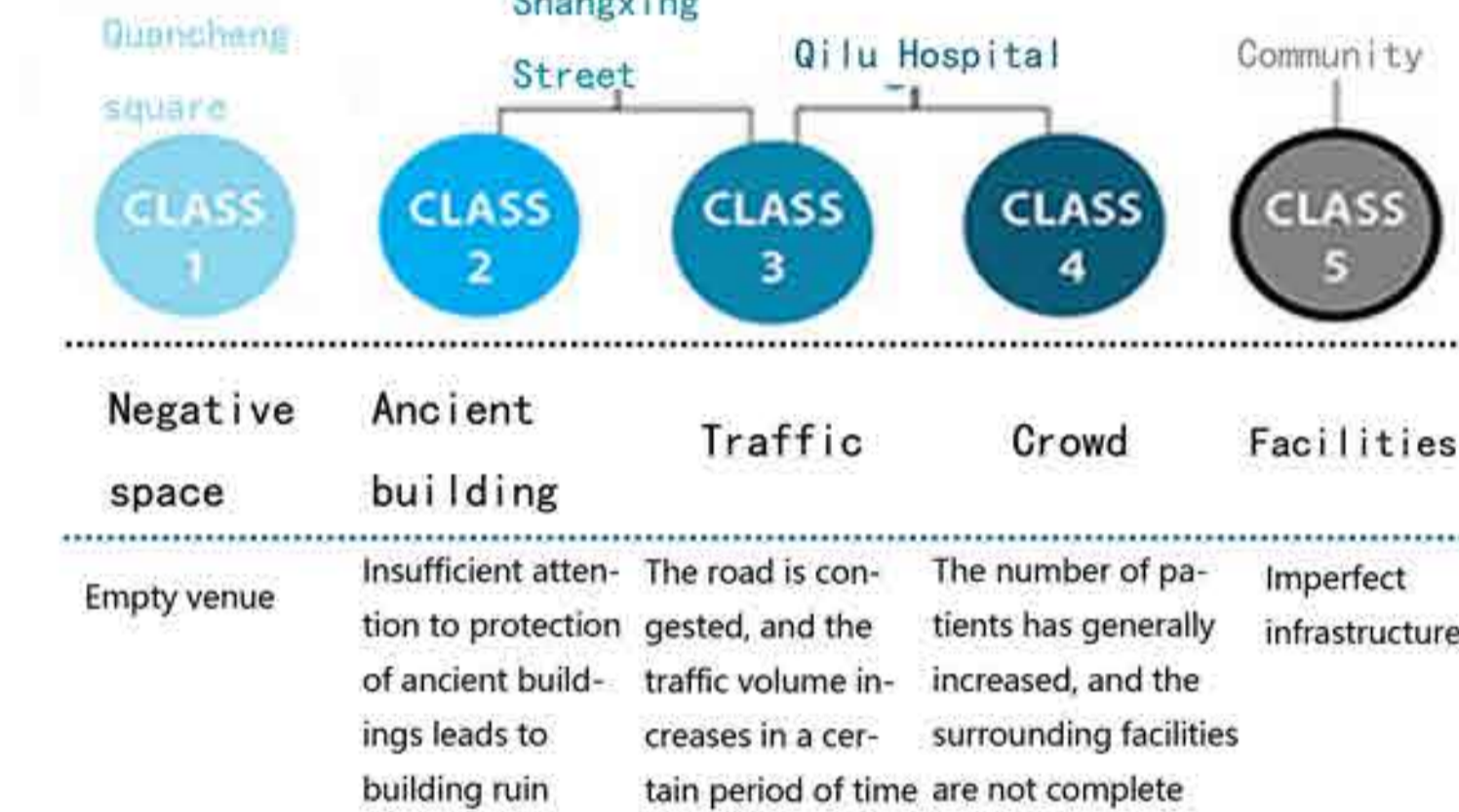
Healthy Community Design

Part1: Base Overview

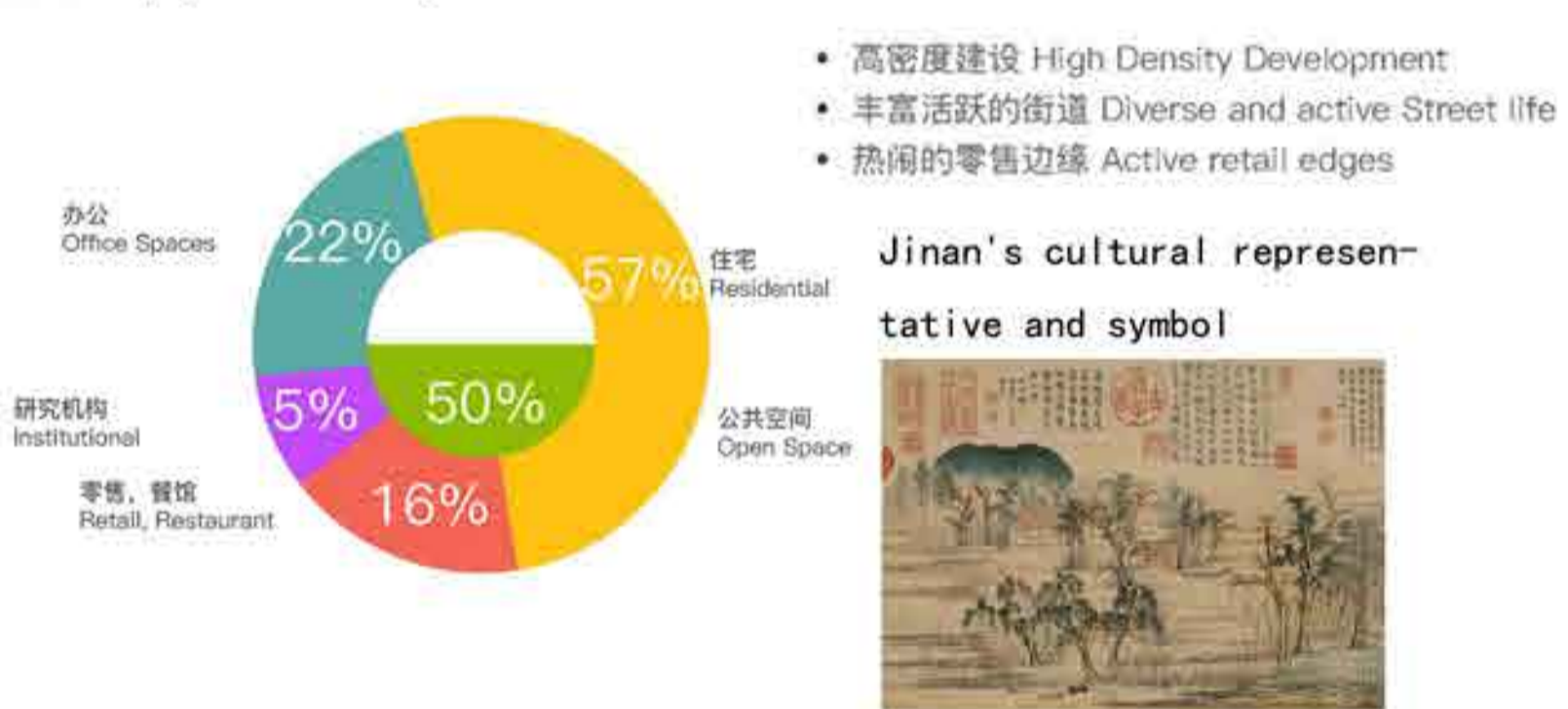
Strength



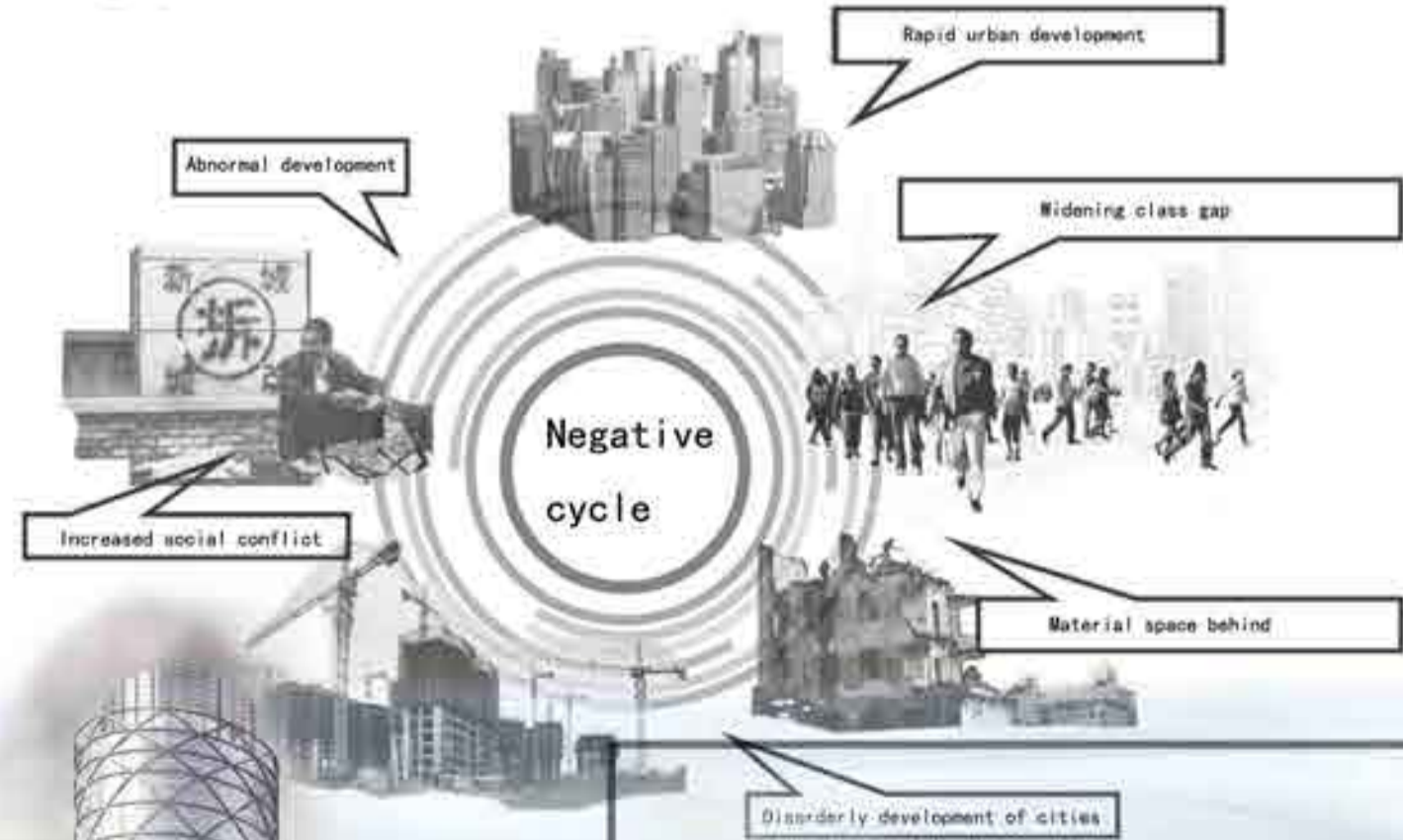
Weakness



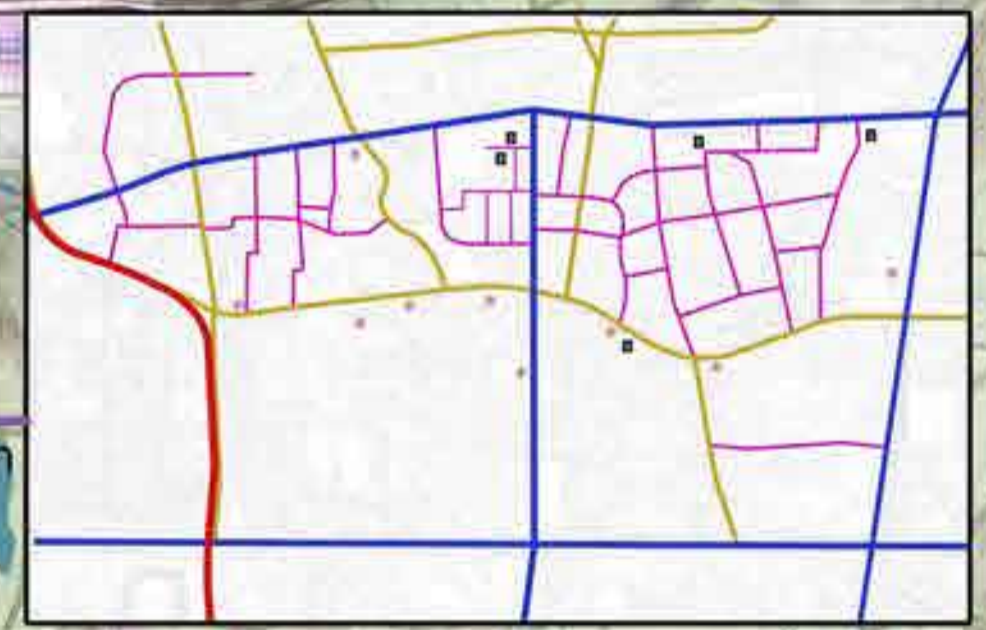
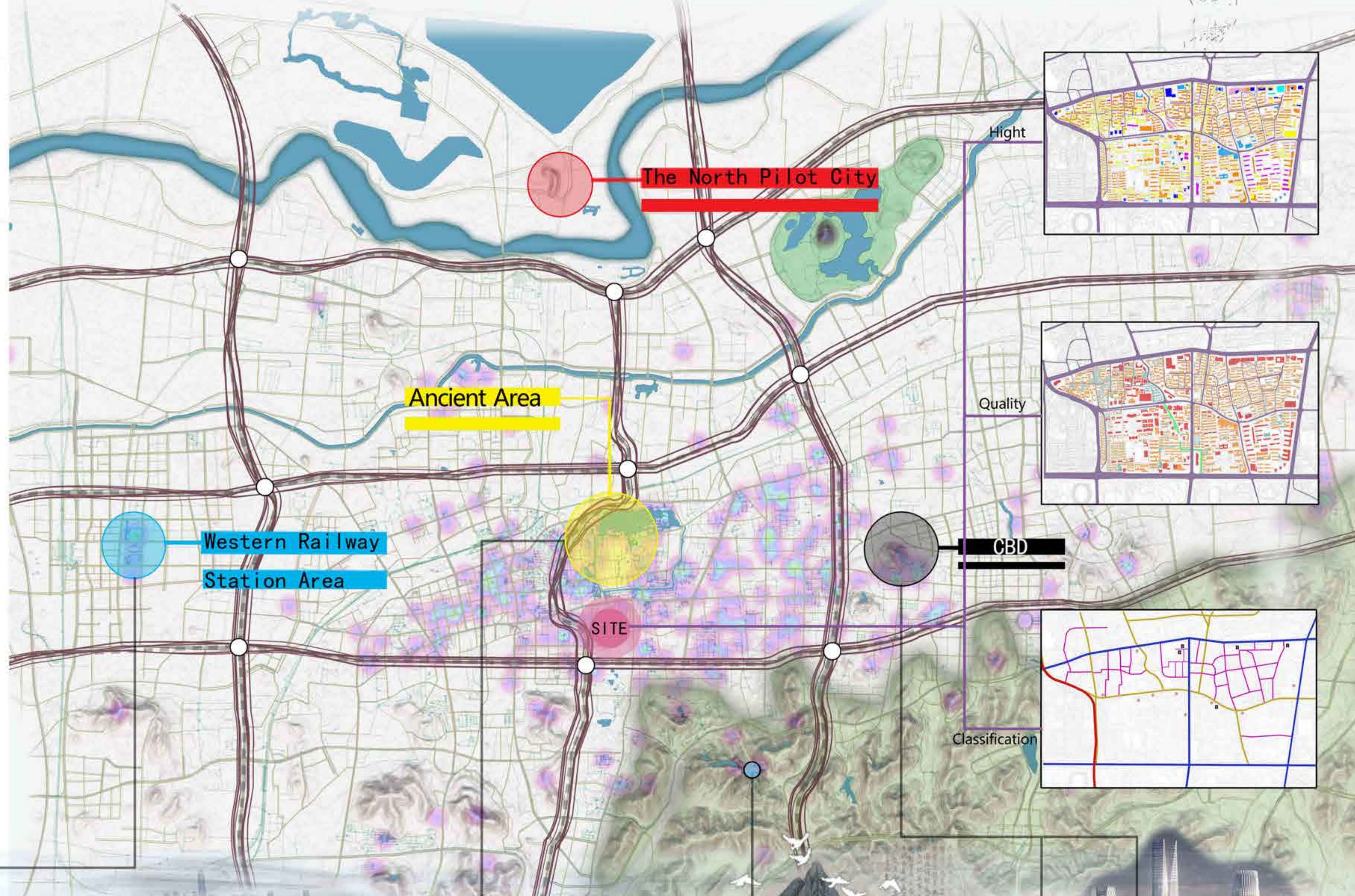
Opportunity



Threat



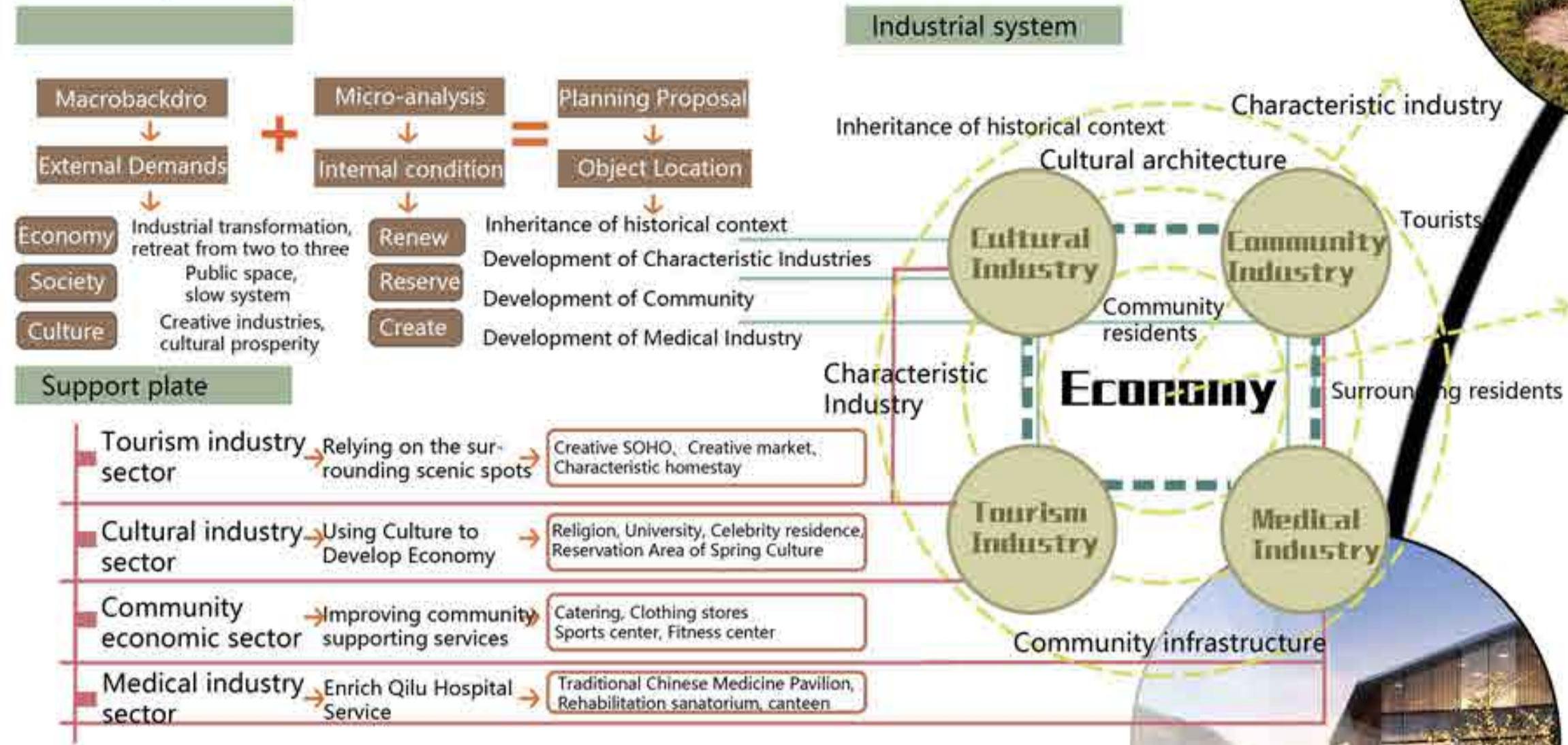
Location Plan



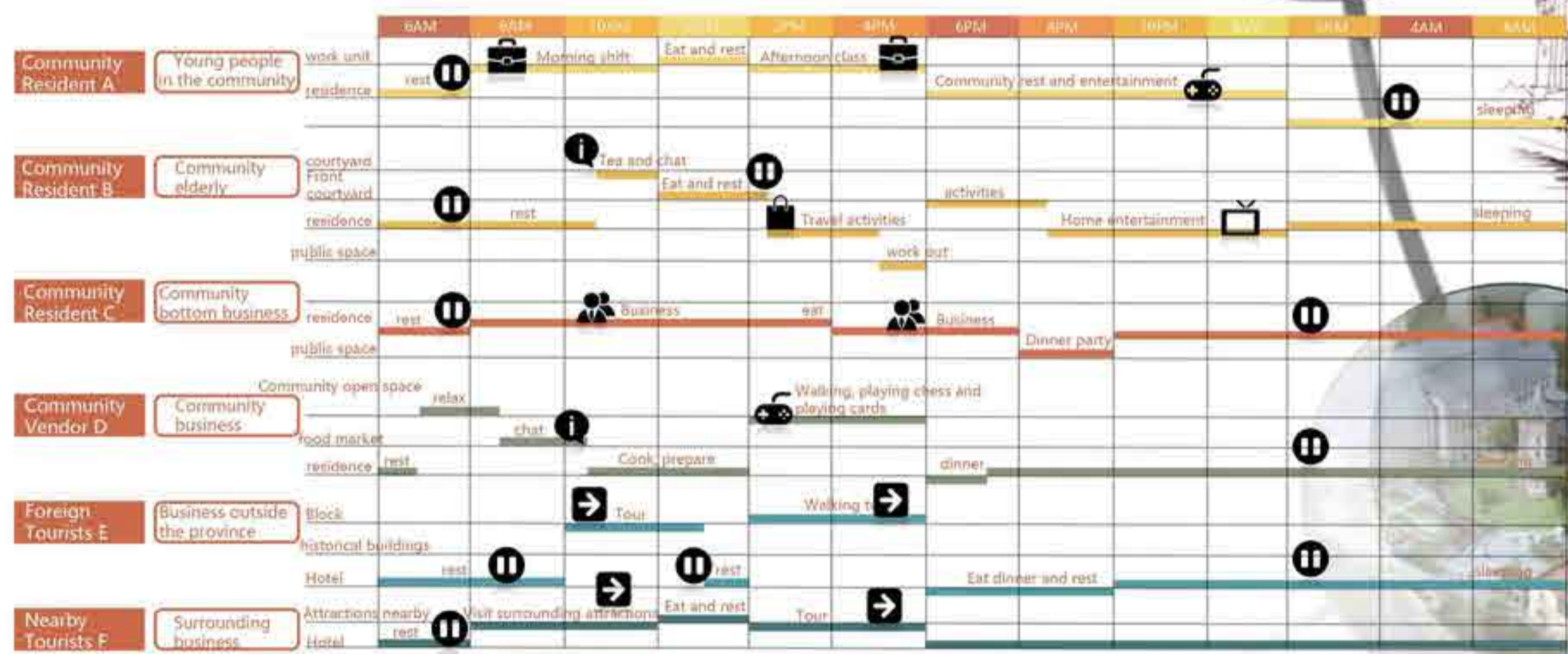
Healthy Community Design

Part2: Design intent

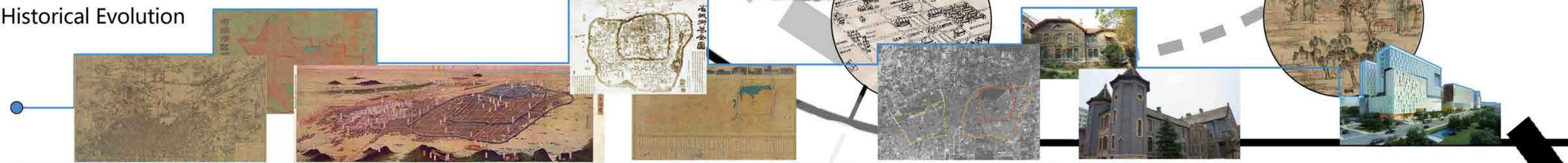
Industry Analysis



Activity analysis



Historical Evolution



Role Of Ji' nan



The City's Treasure

The City's Cultural Embrace

The City's Landscape

Co-construction, Co-governance, Co-sharing Healthy Community Design

Part3:15-Minute Life Circle

■ Concept

15 minutes community life circle is the basic unit of urban community life. The 15 - minute life circle is more like a working concept, and it is the overall goal of formulating standards and norms, without special emphasis on the scope of specific individual life circle. In order to facilitate the connection with the detailed planning and management work, it is implemented in the detailed planning. The specific spatial boundary is mainly based on the boundary of the detailed planning unit, with an area of about 3 square kilometers and a corresponding population of 50,000-100,000.



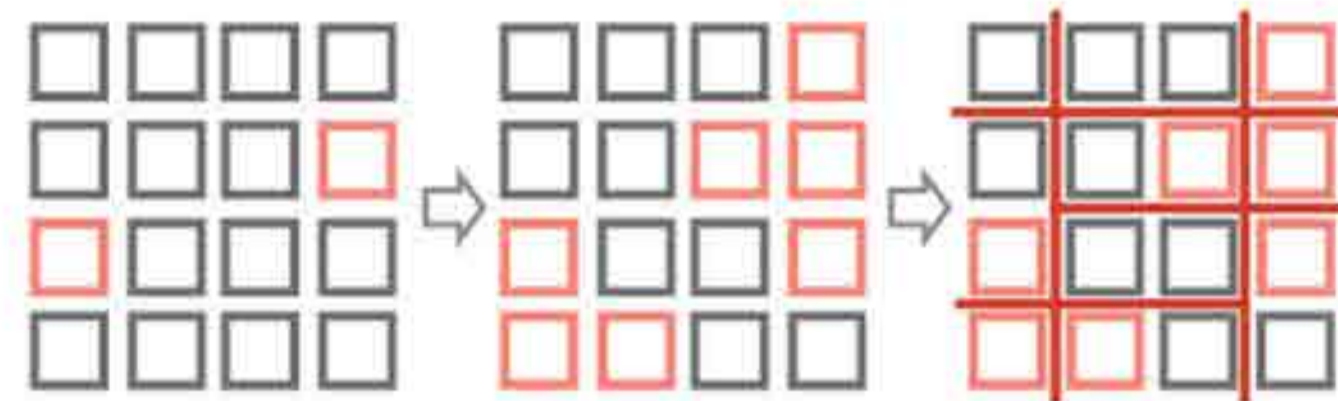
■ 15-Minute Walk Time Circle

The base is located in the center of the Laocheng area of Jinan City, Shandong Province, China, surrounded by infrastructure and rich tourism resources. The walking distance within 15 minutes can be estimated through the 15mins walking isochronous circle. The results show that all famous scenic spots, squares, infrastructure, shopping malls, snack streets and so on can be reached in 15 minutes' walking time.

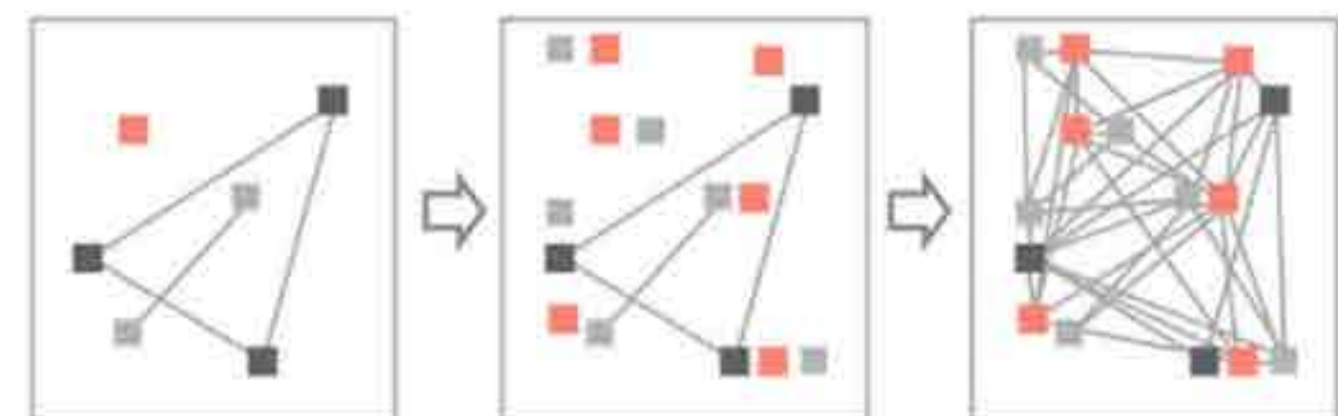


■ Community planning exploration

● Spatial differentiation and integration



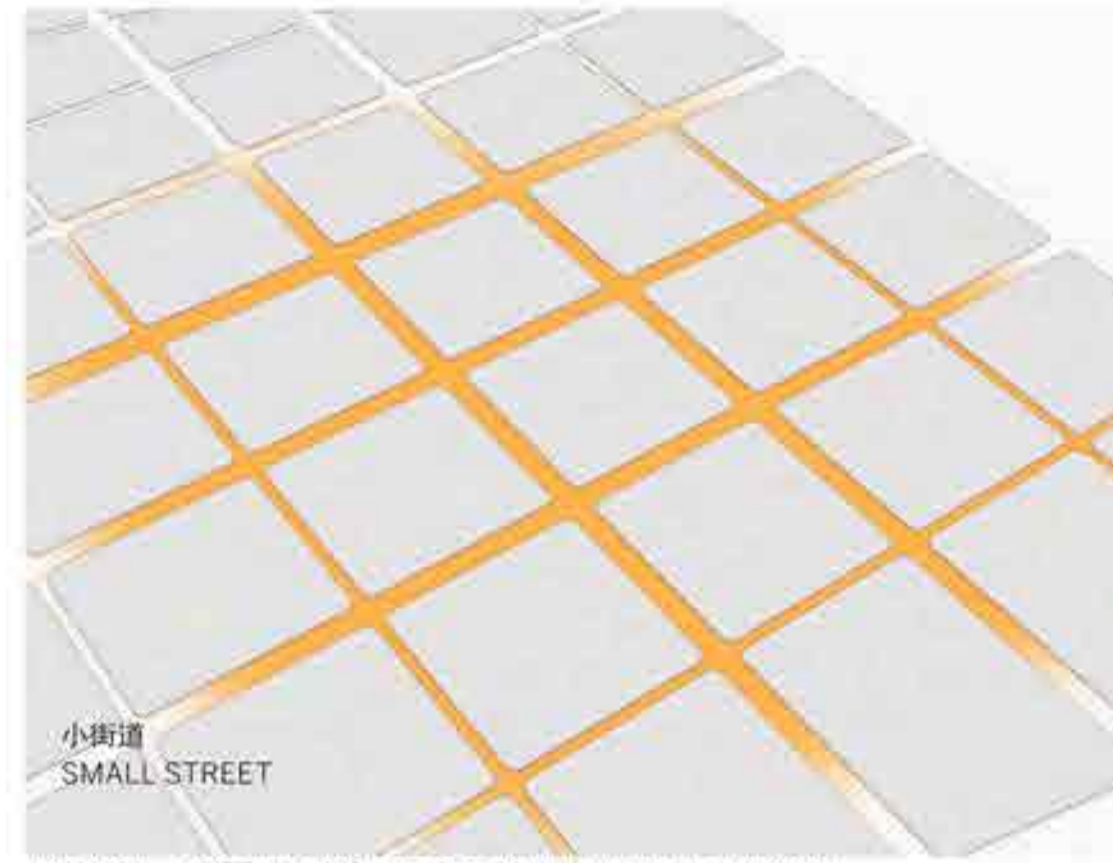
● Community Communication and Contact



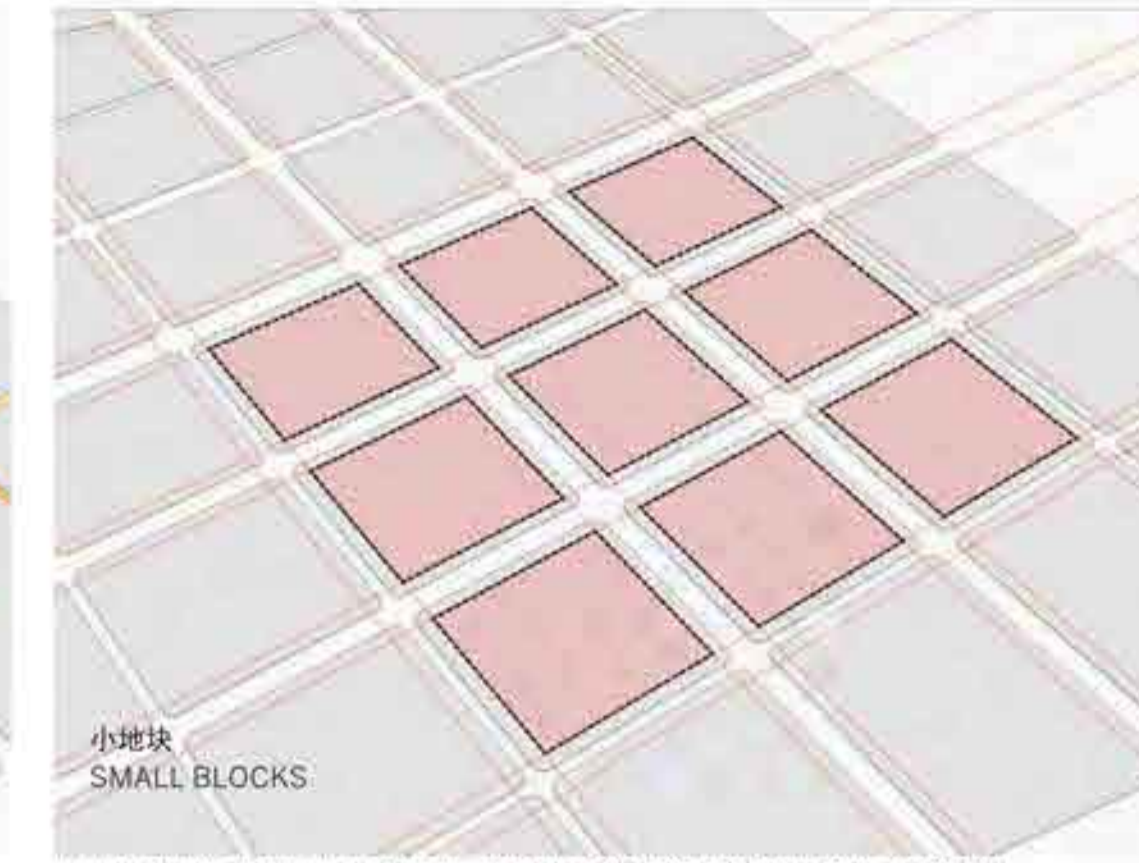
● Application of 'Space Gene'



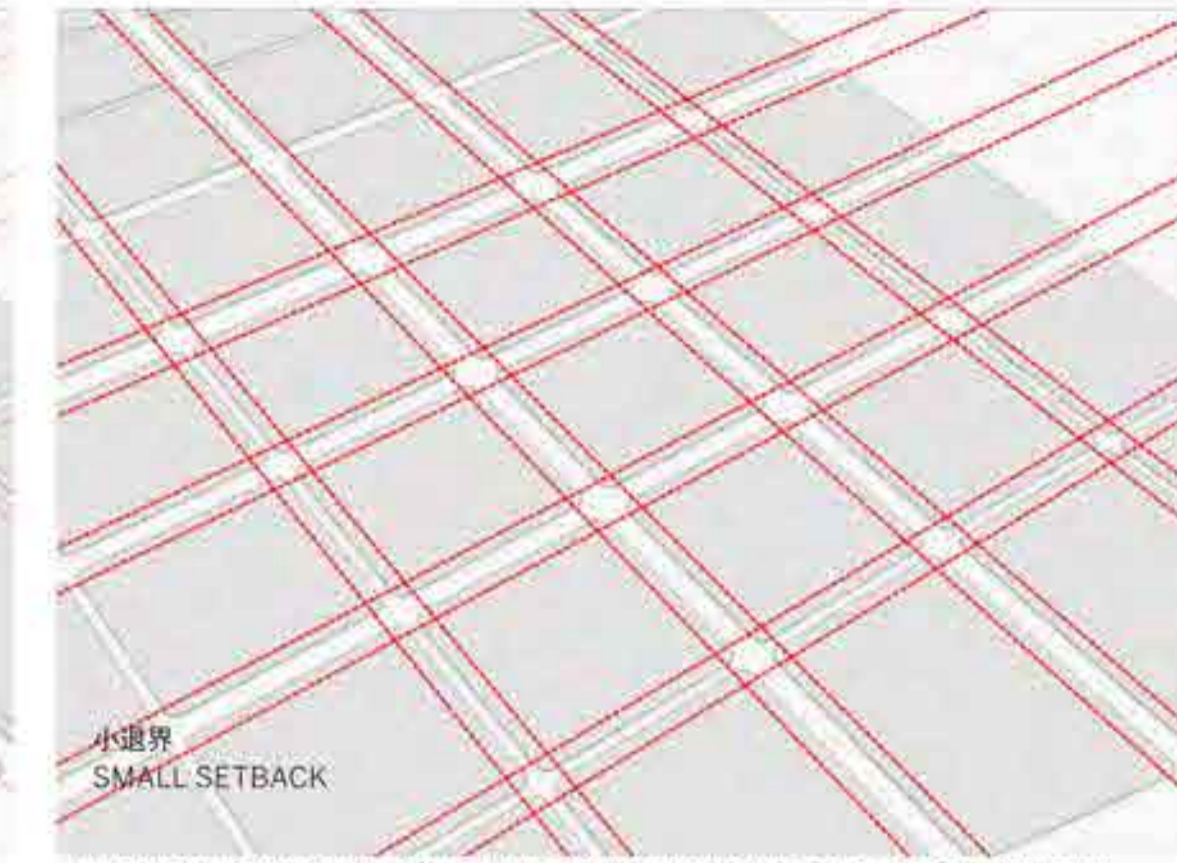
■ Small Block, Dense Road Network



小街道这一步行友好的设计有利于创造人性尺度的公共领域。
Small streets are pedestrian-friendly and create an intimate, human-scaled public realm.

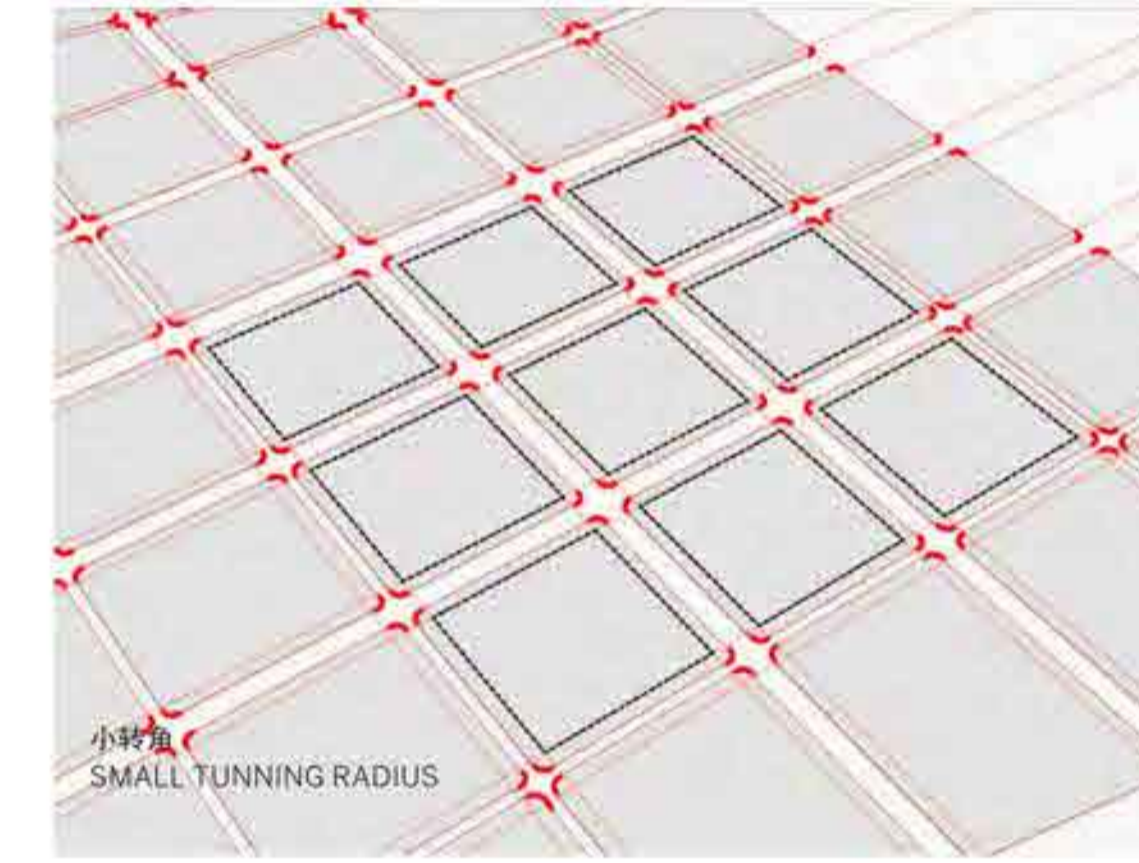


小地块促进了紧凑的城市肌理、活跃的步行空间与游览城市的多样流线。
Small blocks promote a tight urban fabric, pedestrian activity, and a diversity of routes for navigating the city.



小退界保证了建筑贴线，通过对公共领域的界定塑造出活跃而有趣的街道环境。
Small setbacks ensure buildings hold the street edge and frame the public realm to create active, interesting streets.

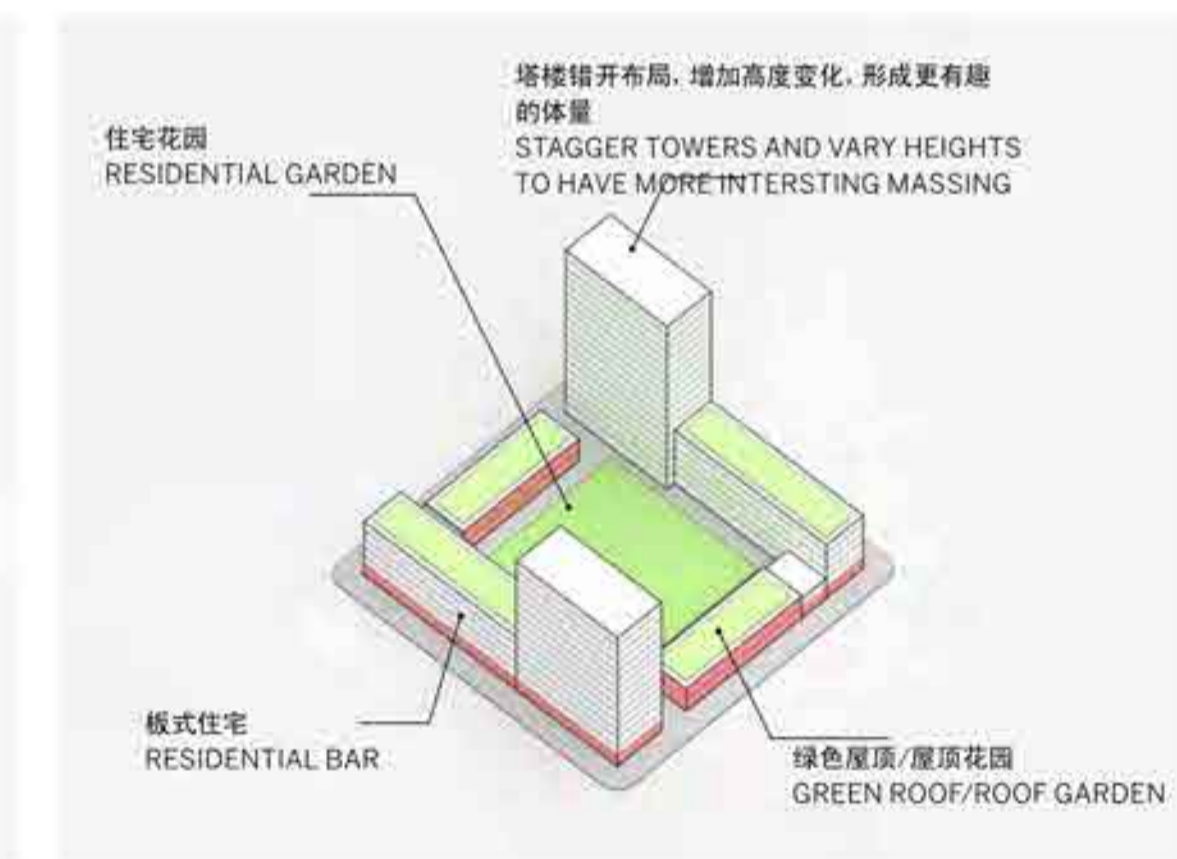
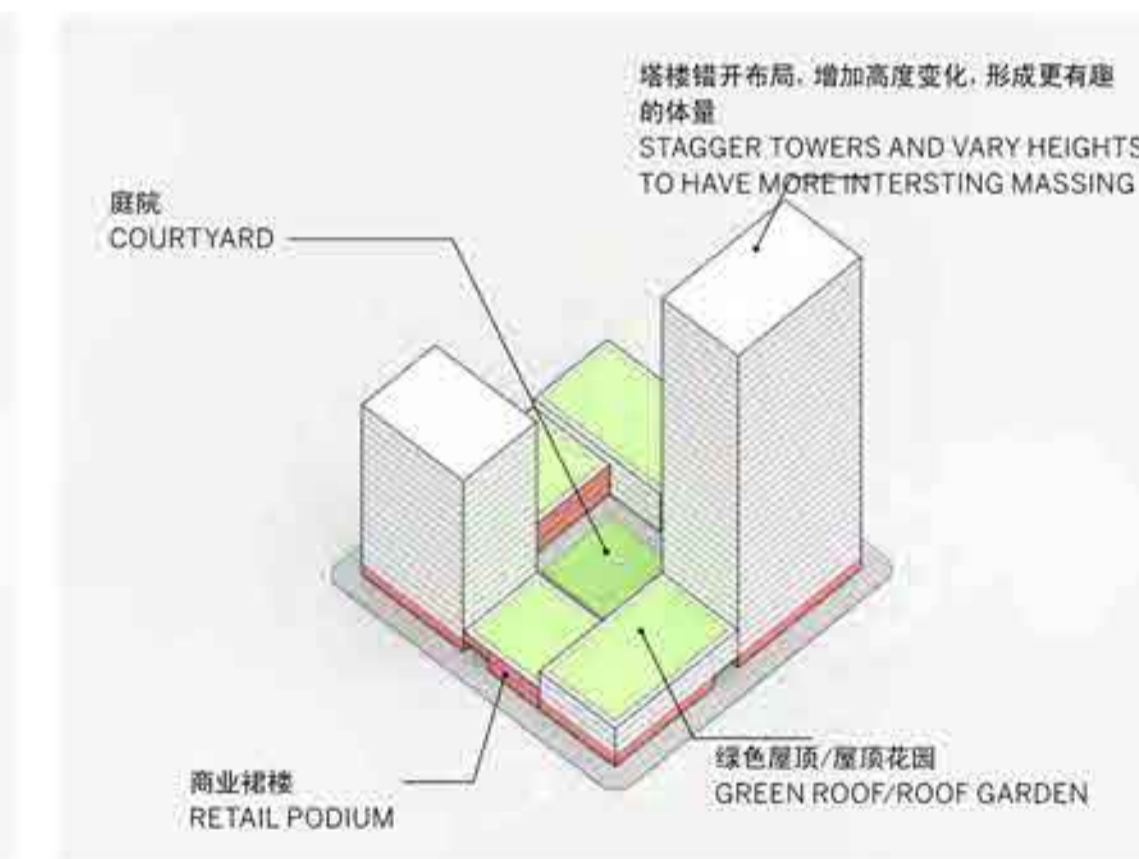
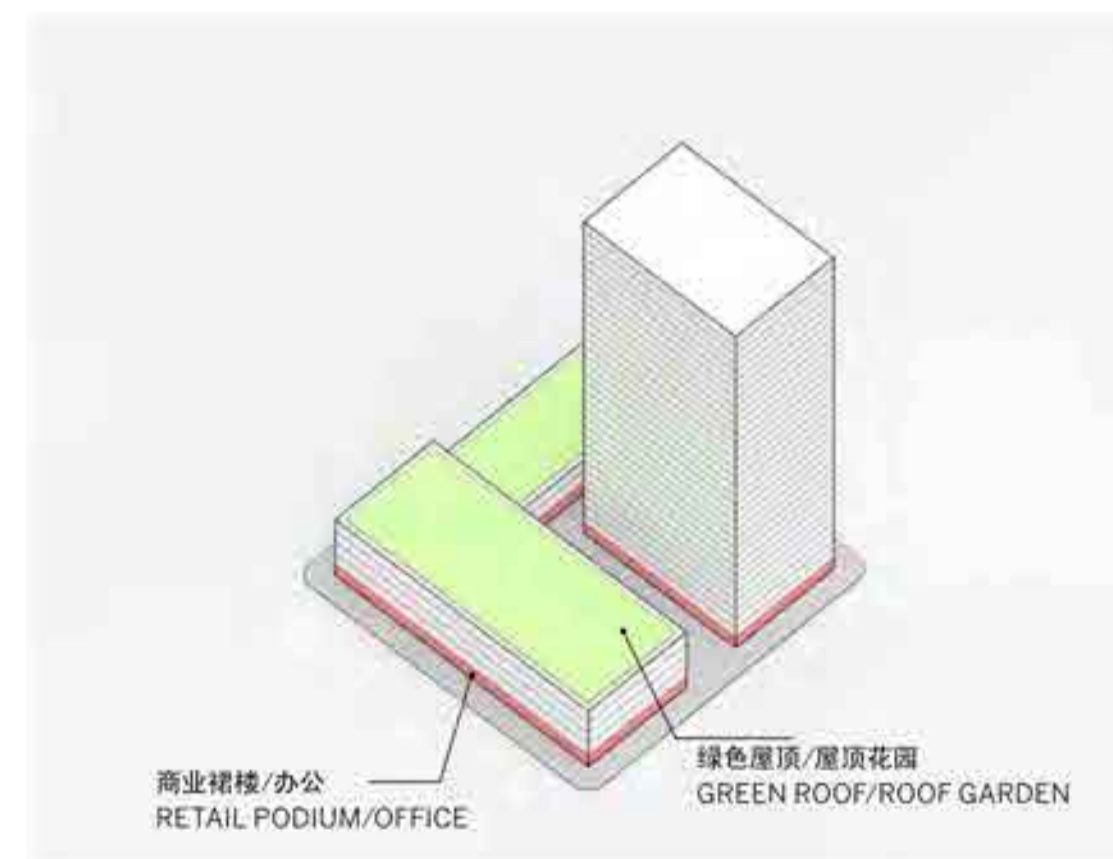
Using the planning method of small blocks and dense road network, while creating a more pleasant walking space scale, it also divides the plots into blocks with clear boundaries and functions.



设置小转角的交叉口，拥有安全与令人愉悦的行人过街空间，有利于宜步设计。
Small turning radius create intersections that are safe and pleasant for pedestrian crossings, promoting walkability.



紧凑的绿地将成为城市格网中特别的场所。
Small parks create special rooms within the city grid.



■ 'High-rise community'

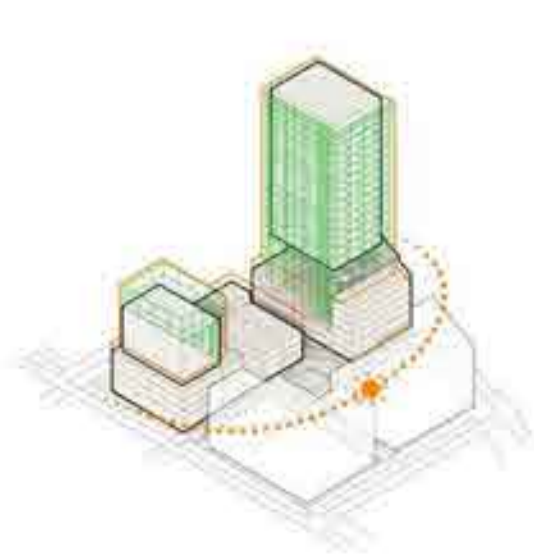
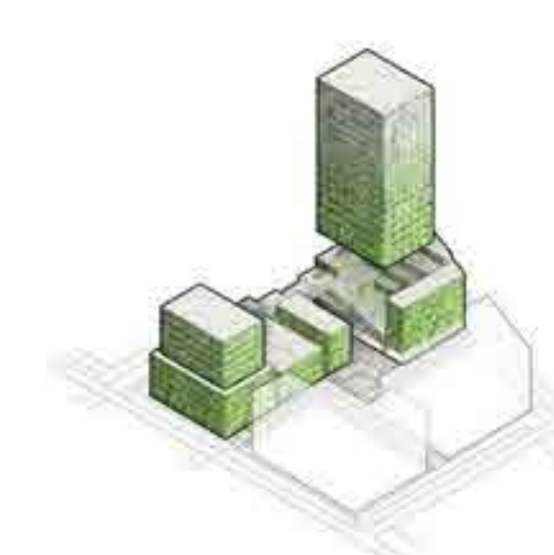
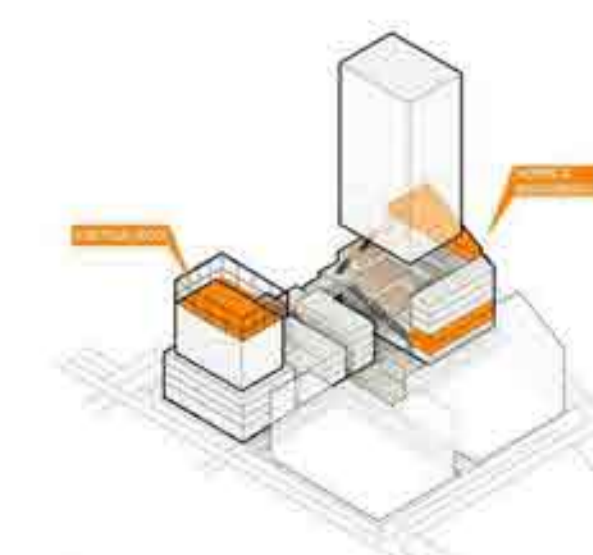
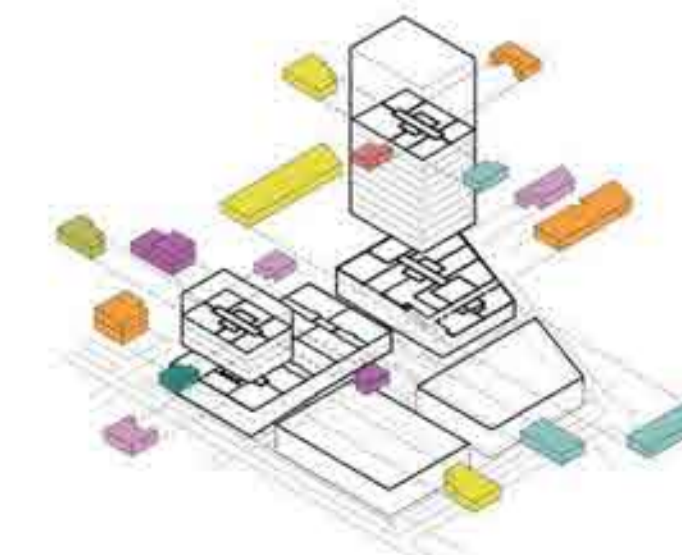
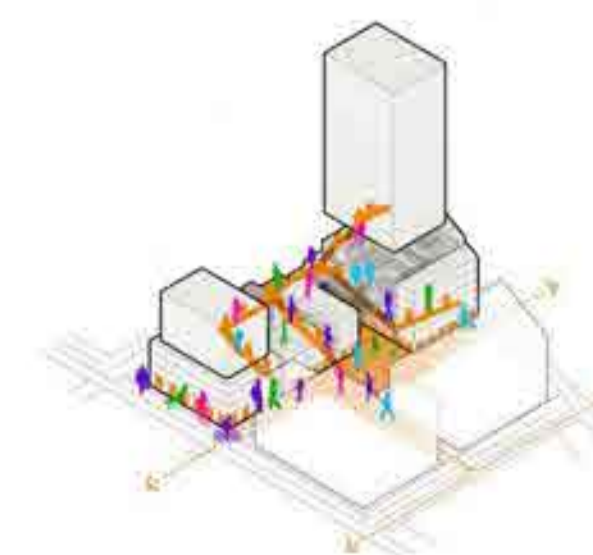
Communication streamline

Social space

Aerial platform

Hanging garden

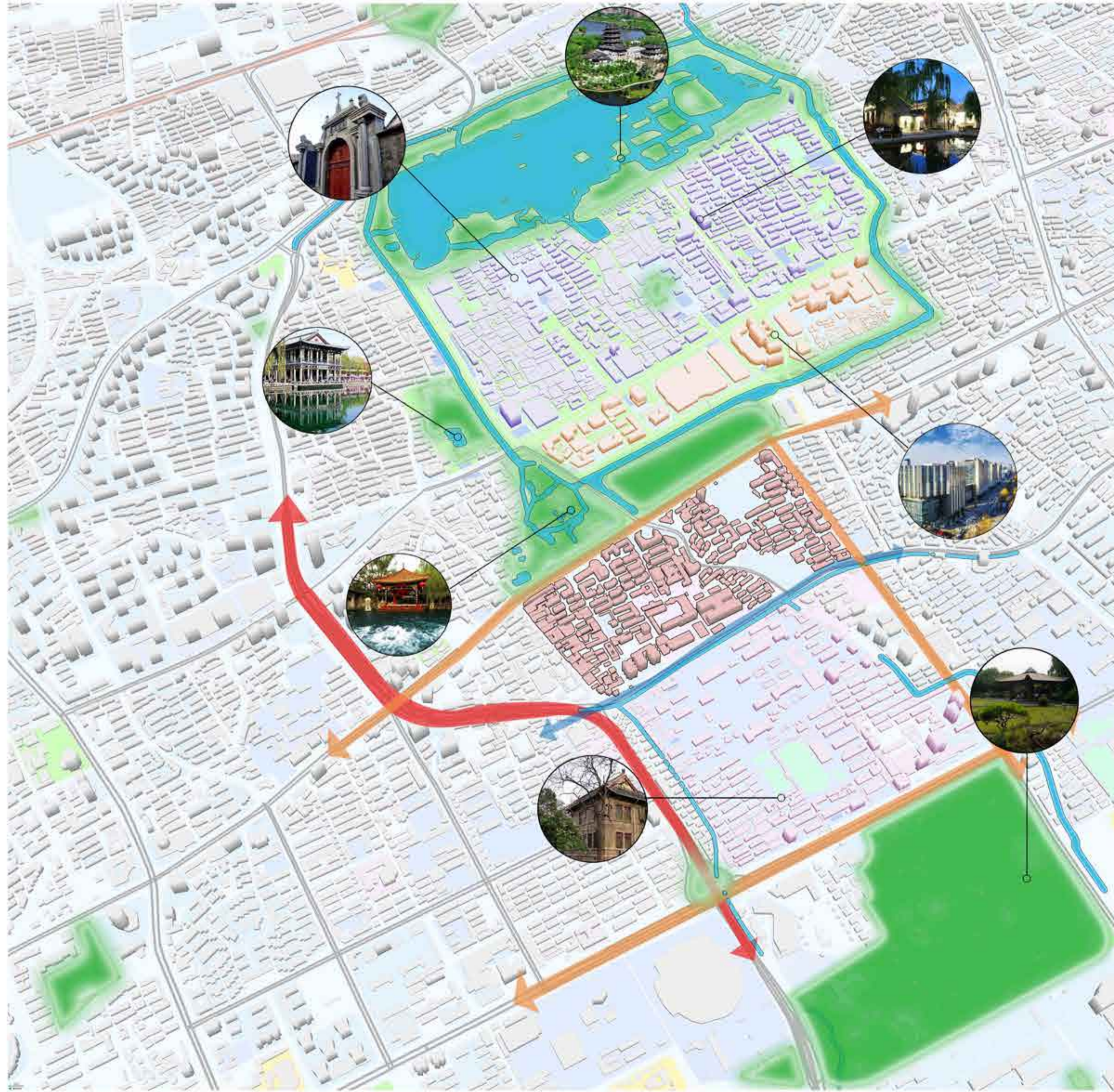
Sunshine



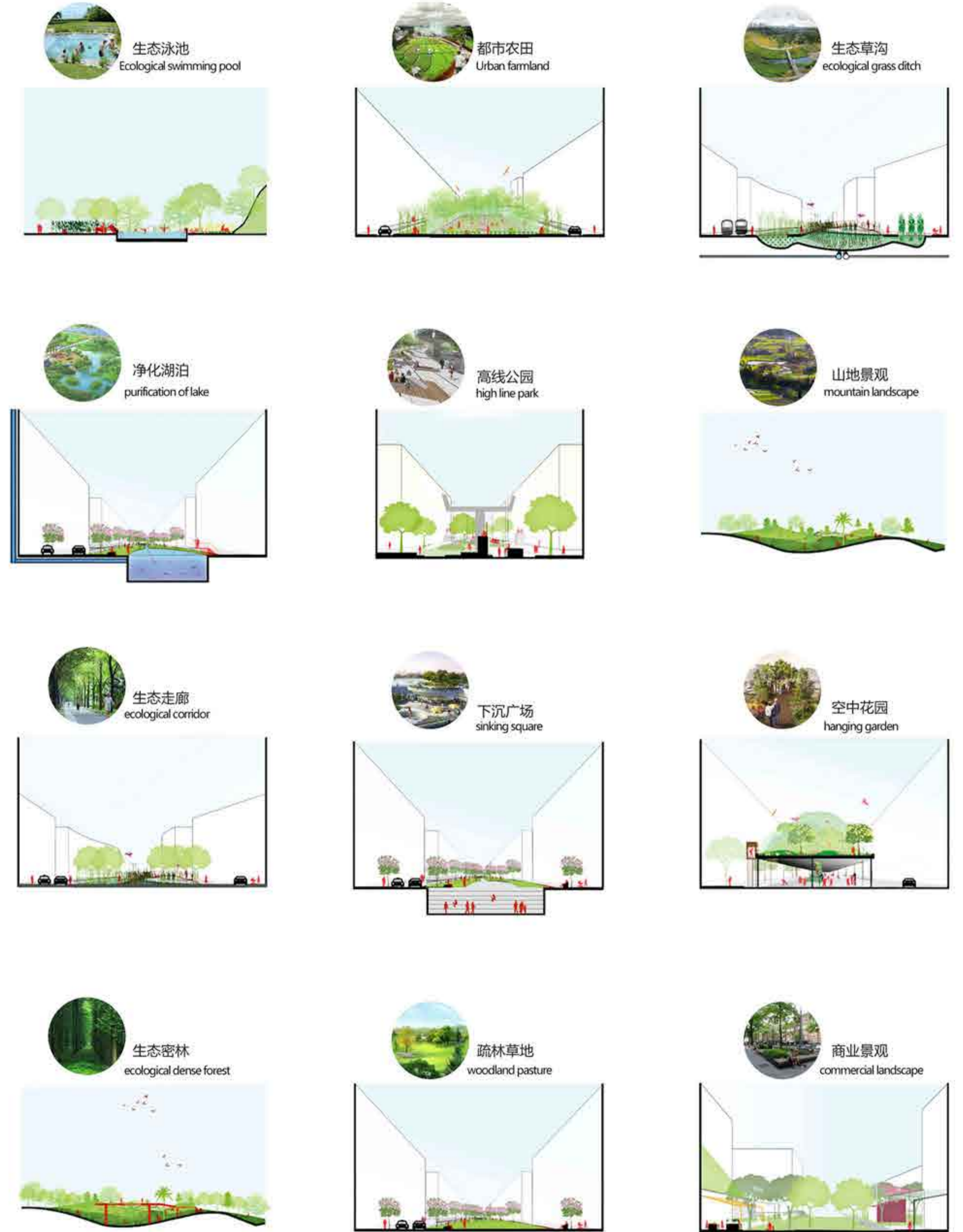
Healthy Community Design

Part4: Landscape Design (1/3)

■ Important landscape sites around



■ Diversity of space

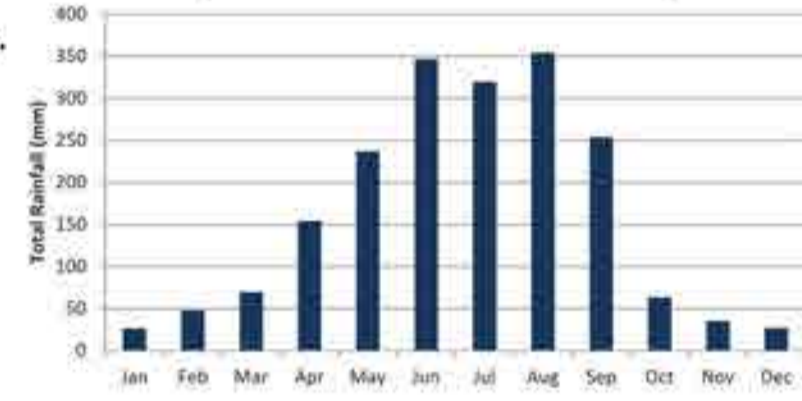


Healthy Community Design

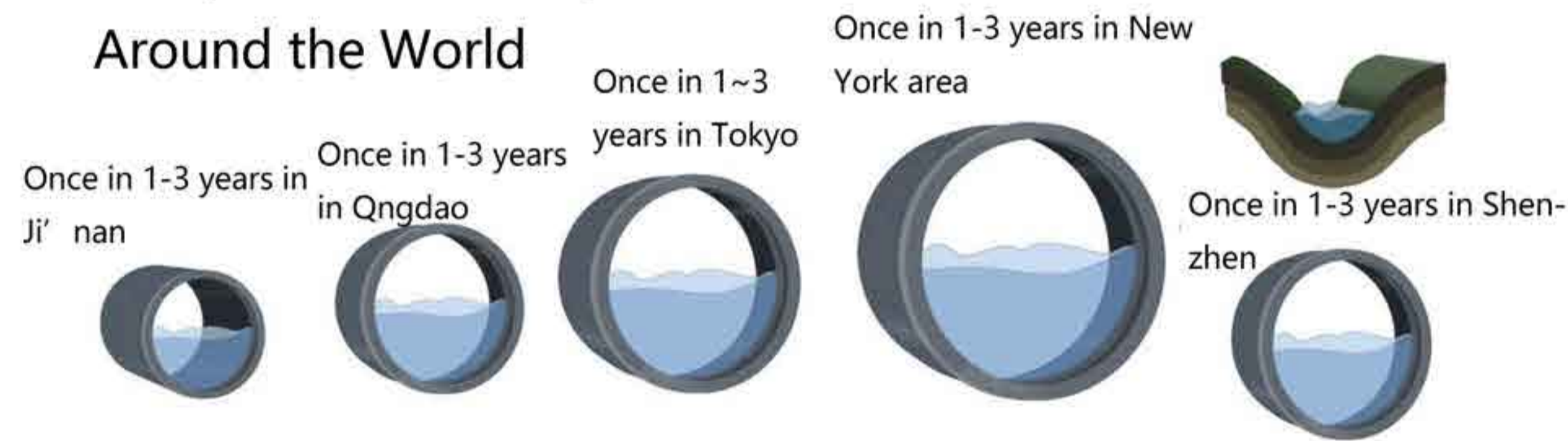
Part 4: Landscape Design (2/3)

Problems caused by precipitation

Jinan is a warm temperate continental monsoon climate zone, but surrounded by the Taishan Mountains, forming a hot summer and cold winter, four distinct continental monsoon climate. In winter, it is controlled by polar or polar deformation continental air masses, and constantly invaded by dry and cold air masses from Siberia. The prevailing northwest, north and north-east winds cause dry and cold winter, sunny weather and less precipitation.

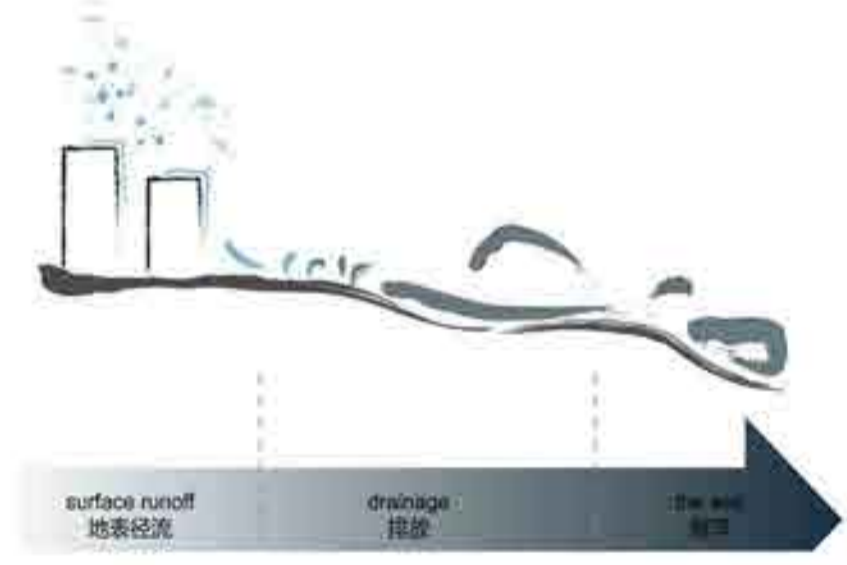


Comparison of Precipitation in 'One Hundred Years' Around the World

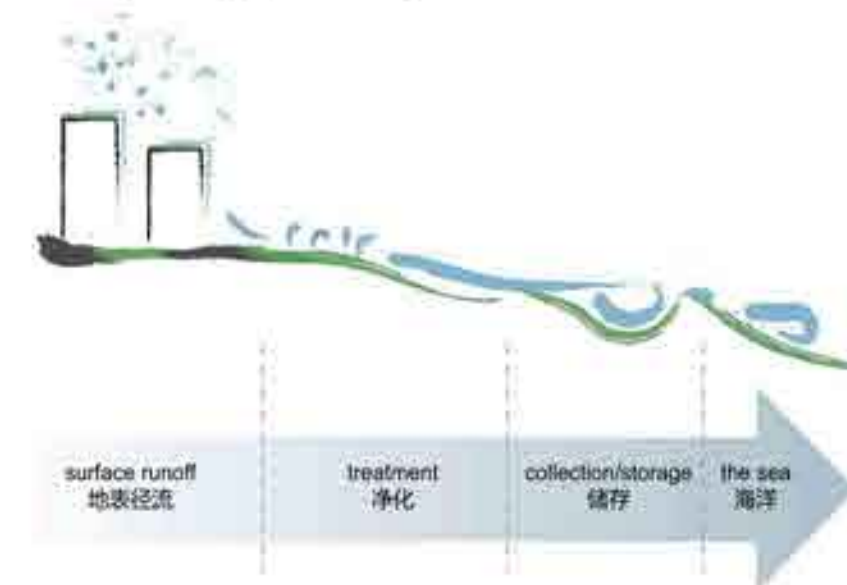


Sponge City Planning Strategy

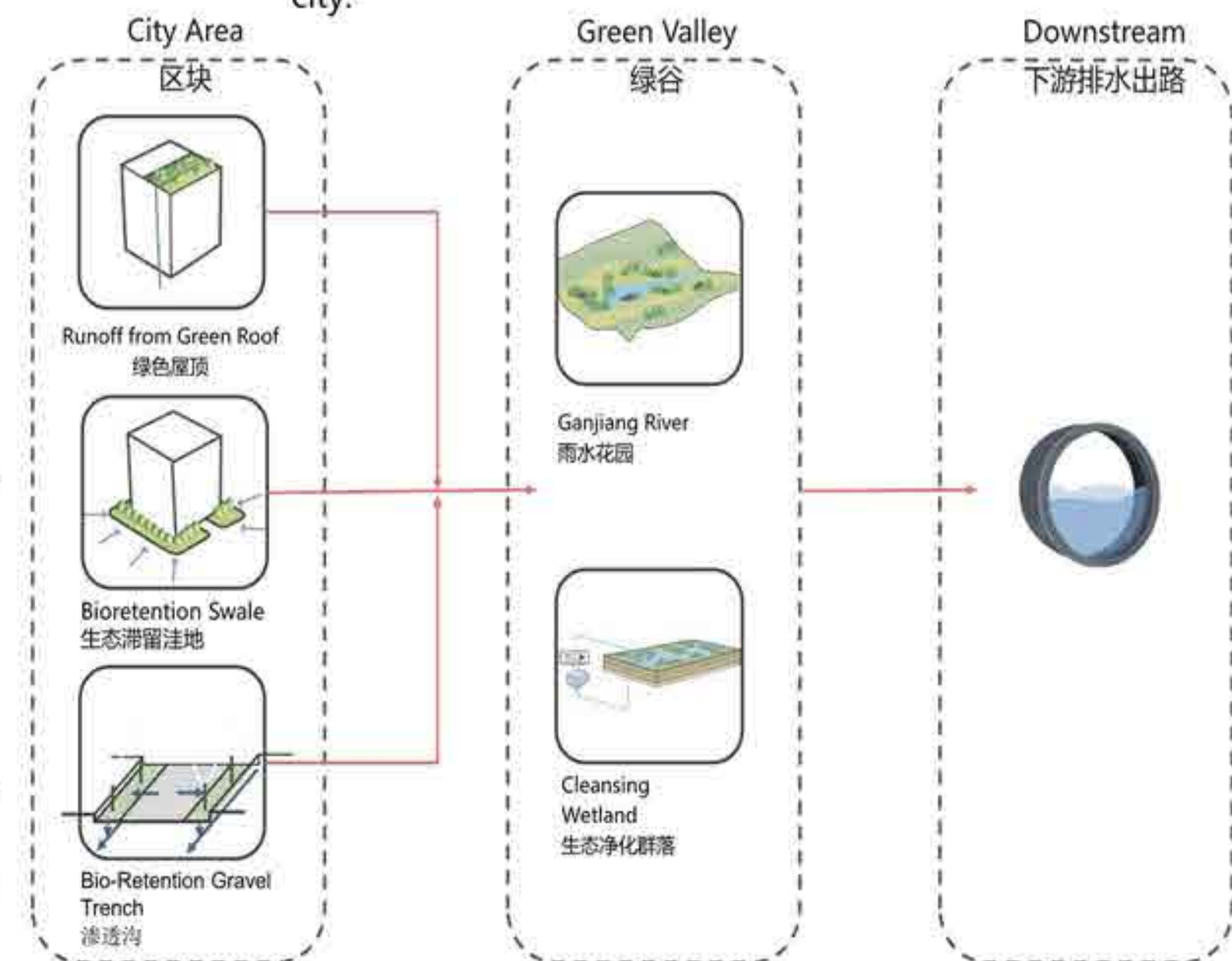
Traditional urban infrastructure



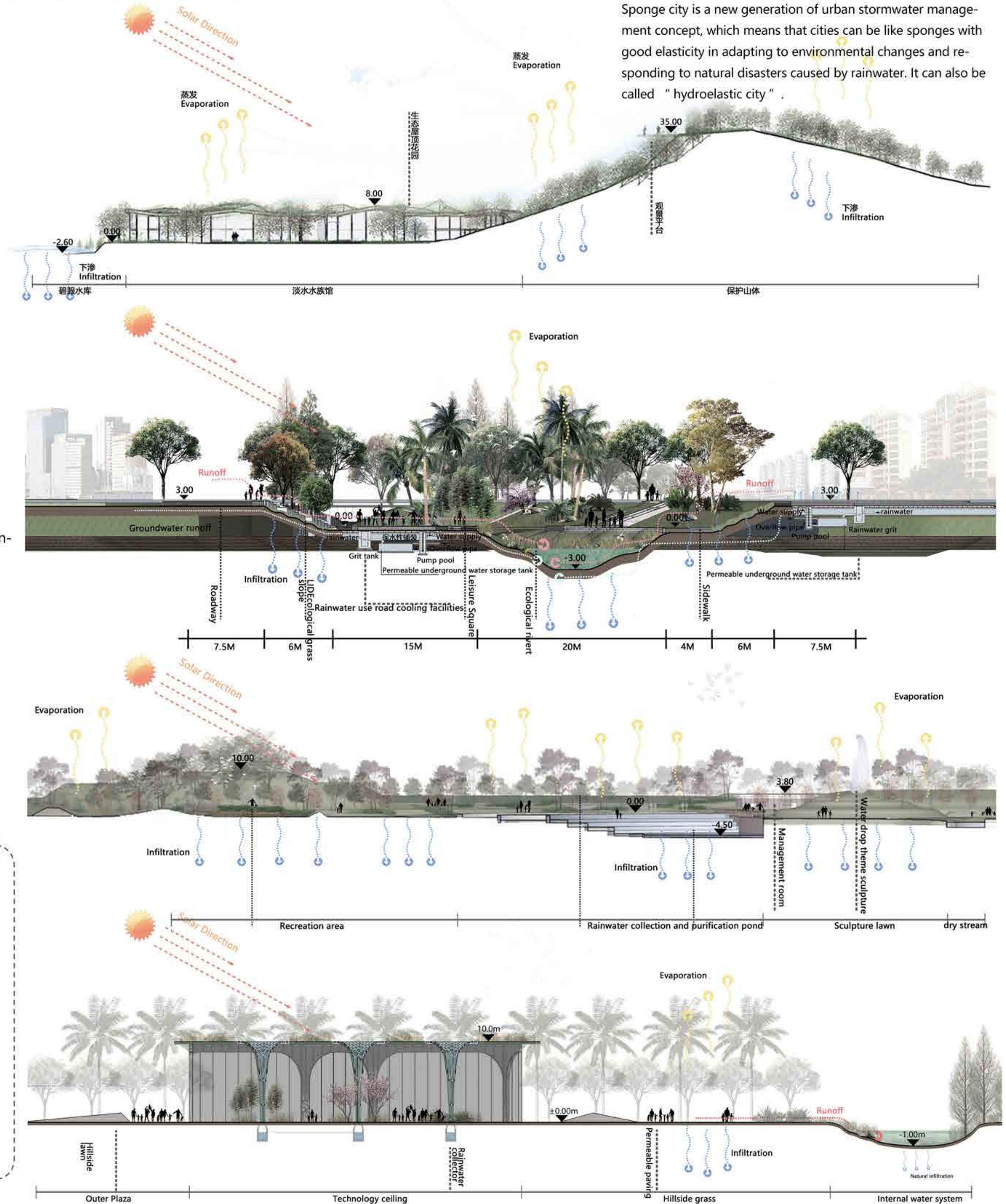
Sponge City Infrastructure



The international general term is 'low impact development rainwater system construction'. When it rains, it absorbs water, stores water, seeps water and cleans water. When it needs, it releases and uses the stored water to realize the free migration of rainwater in the city.



Sponge city effect diagram

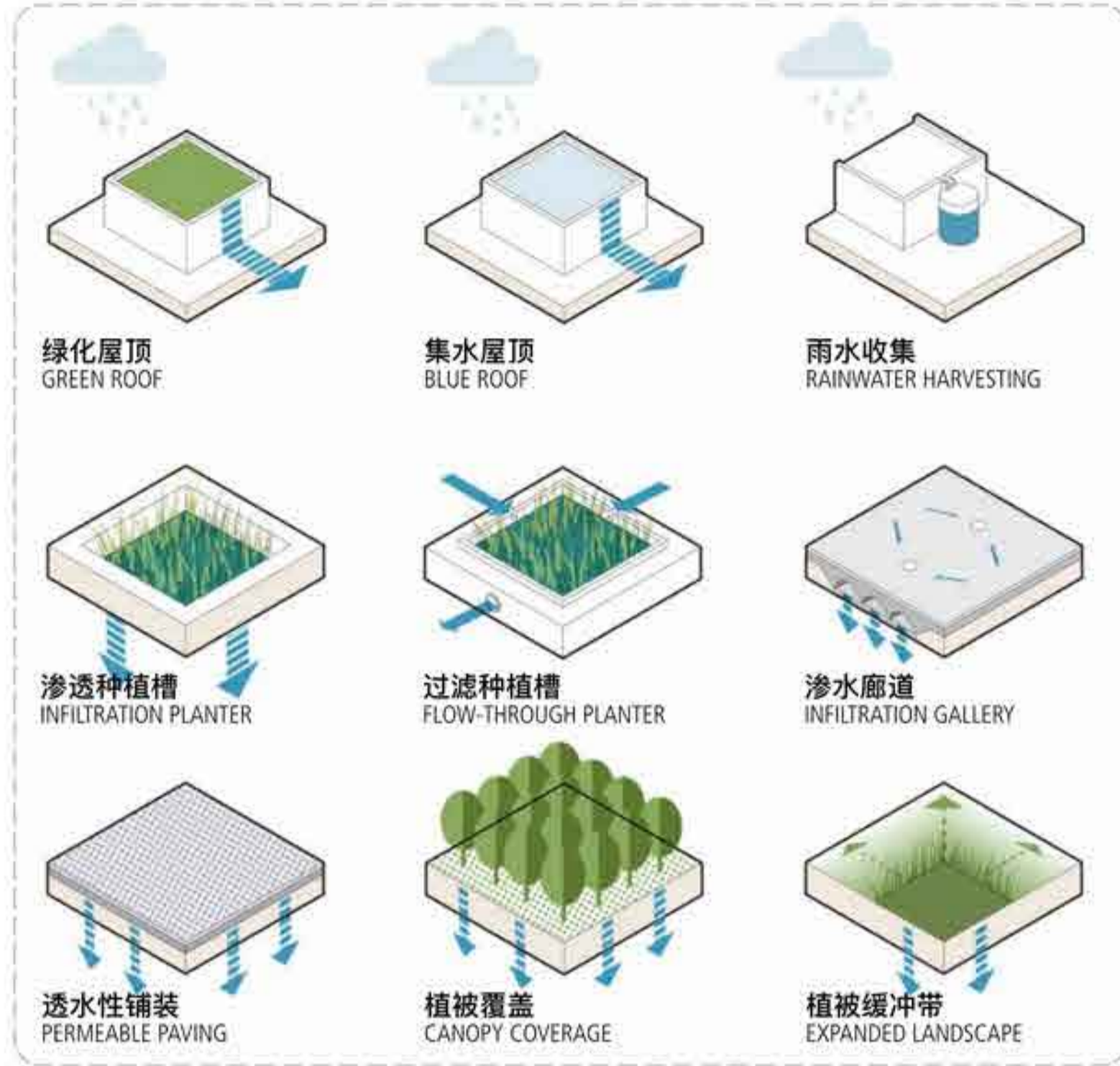


Sponge city is a new generation of urban stormwater management concept, which means that cities can be like sponges with good elasticity in adapting to environmental changes and responding to natural disasters caused by rainwater. It can also be called "hydroelastic city".

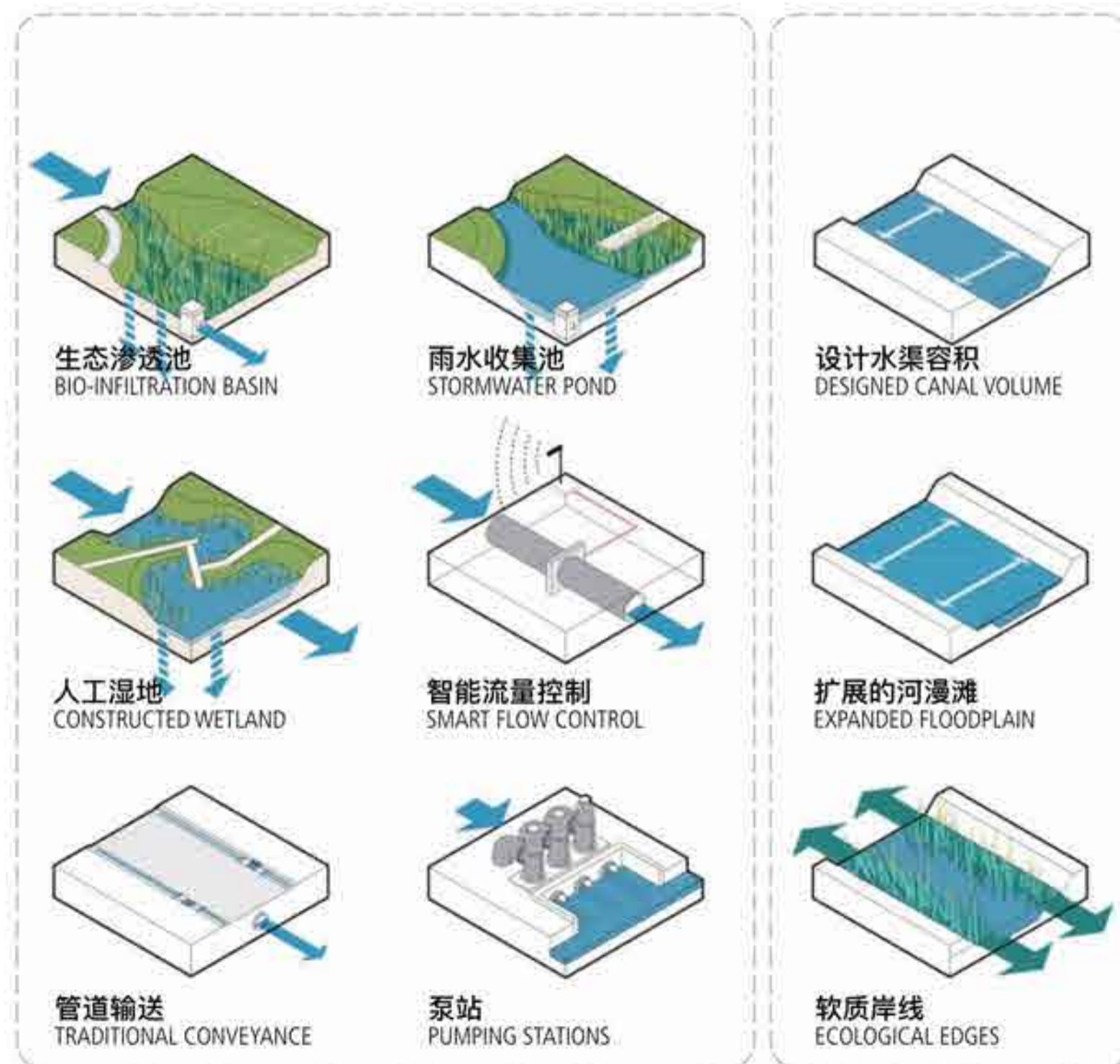
Healthy Community Design

Part4:Landscape Design (3/3)

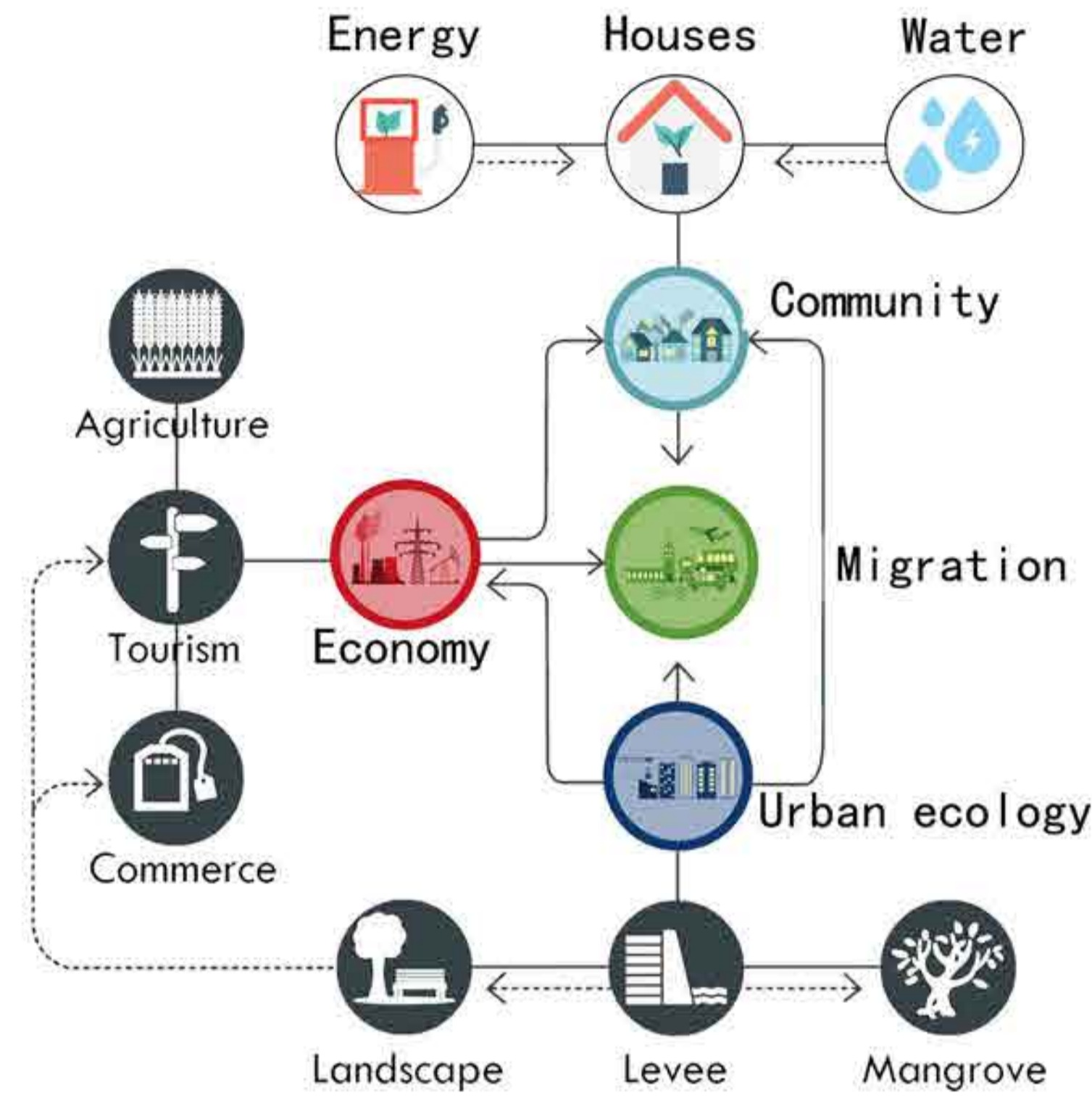
■ Rainwater harvesting strategy



■ Wetland ecology to community



■ Urban Ecological Cycle



■ Ecological landscape planning strategy ■ Community park effect diagram

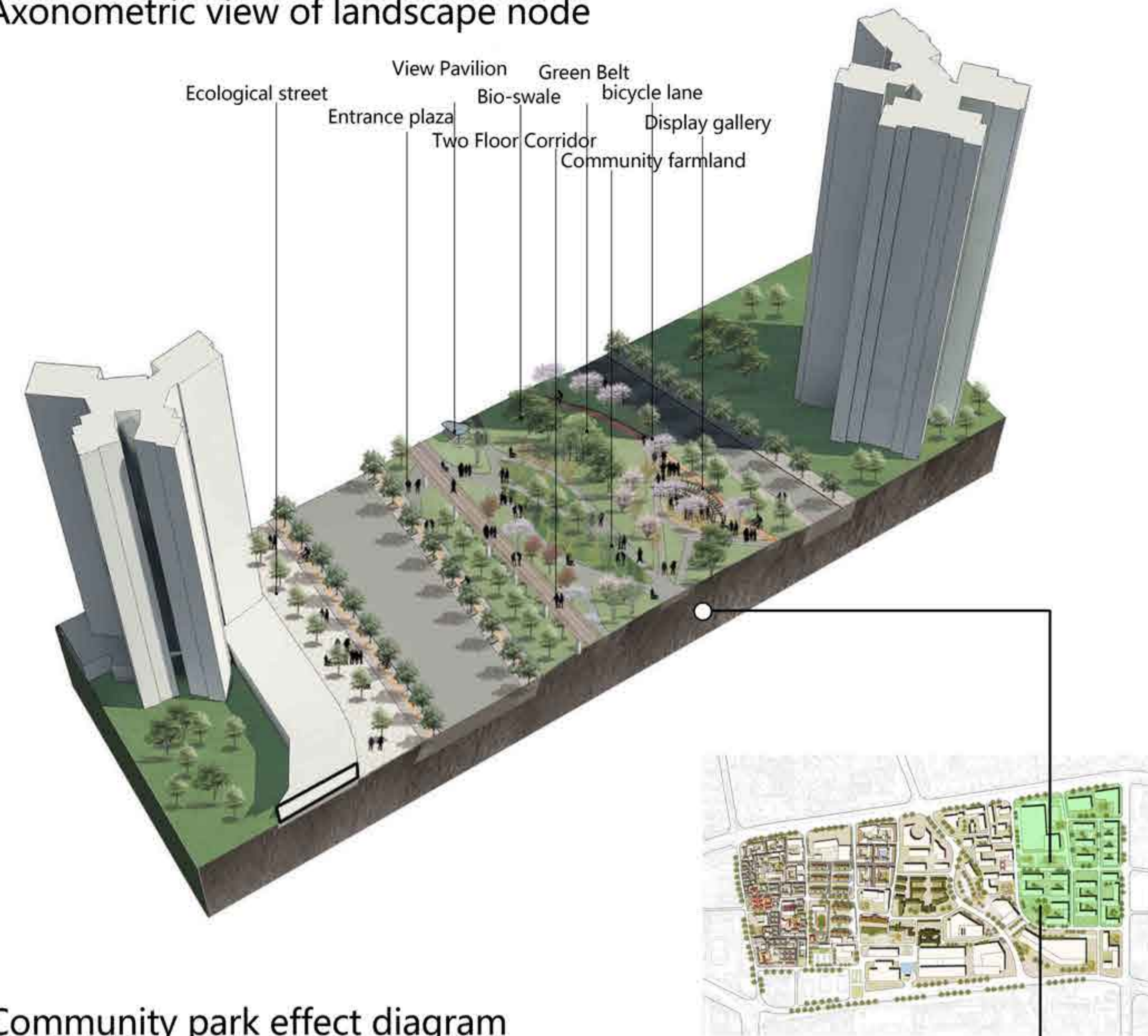
Based on the idea of "sponge city", planning and designing the park green space in the plot. First, according to the "Fifteen Minutes Living Circle Planning Guidelines", quantitative and positioning control of the green parks required by each residential neighborhood.

Secondly, extract the cultural characteristics of Jinan city-mainly spring culture, as well as landscape resources such as "mountains, lakes, rivers" and Jinan's eight scenic spots, extract elements recognized by the locals, and create a landscape of "every family flowing water, households hanging poplars" intention.

Finally, community parks should meet the different needs of different people of different age groups and different occupations in the community. According to the functions of the green space park, the functions of the park green space are implanted as follows.

- Slow paths inside and outside the park
- Permeable field
- Soft ground-Green space
- Ecological grass ditch
- Local ecological planting design

■ Axonometric view of landscape node



Healthy Community Design

Part5: Qilu Hospital Planning and Design (1/2)

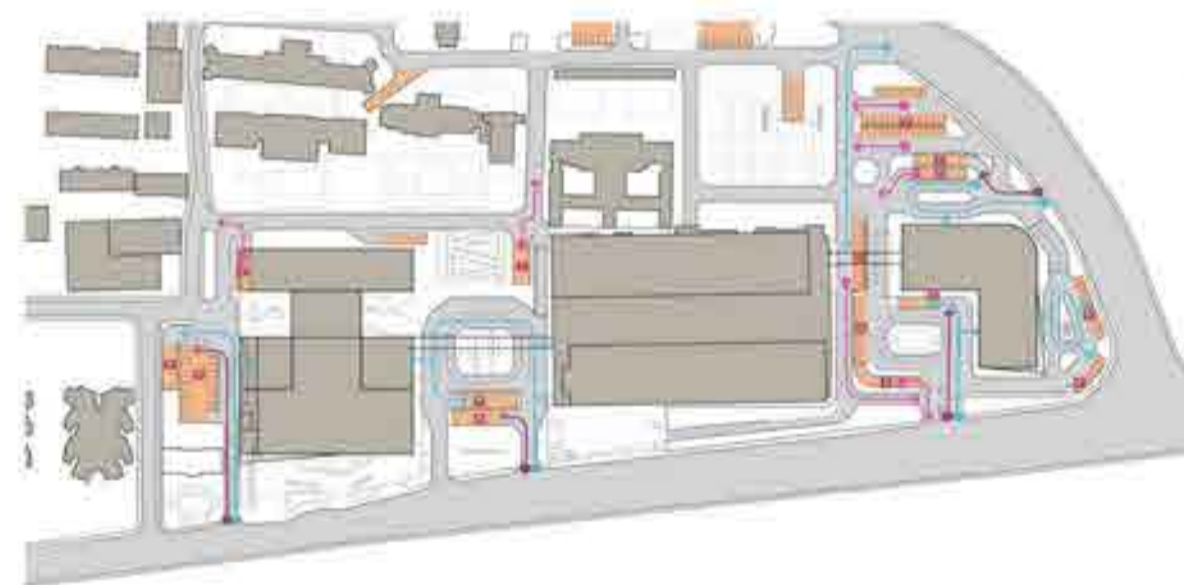
Upper planning



Jinan is an important historical and cultural city in China. In order to protect the rich historical and cultural heritage of Jinan, handle the relationship between urban protection and development, scientifically protect and rationally use the famous city and its historical and cultural relics, the "Jinan Historical and Cultural Famous City Planning" has been specially formulated as the protection and management of the historical and cultural city of Jinan in accordance with. There are a large number of historic buildings in the base. The ancient buildings in Qilu Hospital belong to the national historical and cultural district. Therefore, "Jinan City Historical and Cultural City Planning" has important guiding significance for planning and design.



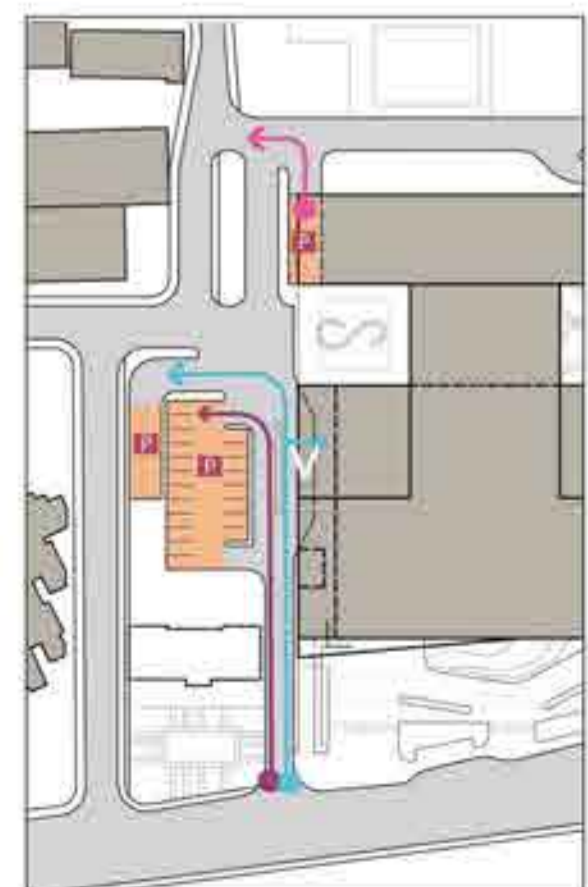
Traffic flow planning



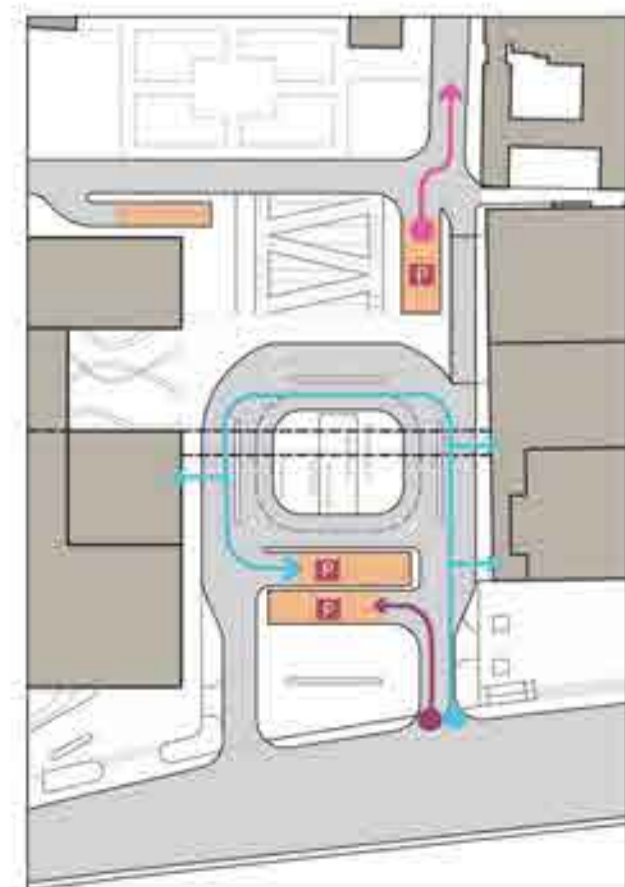
ENTRY ANALYSIS
基地入口分析
基地周边道路: 周边道路较宽, 但缺少直接连接基地的通道。基地周边道路: 周边道路较宽, 但缺少直接连接基地的通道。 Surrounding site with convenient traffic, high accessibility, but easy to be in place.

TRAFFIC ORGANIZATION
广场组织交通
在基地内部和外科楼之间设置“垂直”交通通道, 作为连接, 并设置步行、自行车通道和大型广场, 提升步行体验。 Plaza between the site and the existing surgical building has clear pedestrian and vehicular circulation.

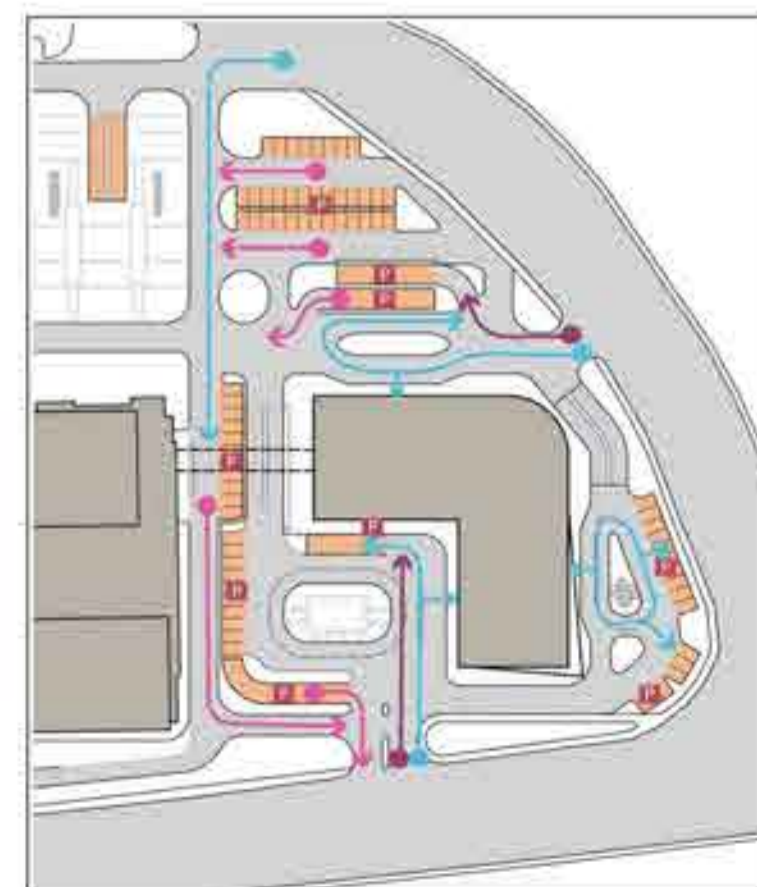
- 送人 drop-off
- 入车库 Enter the parking lot
- 出车库 Leave the parking lot



Pediatric entrance



Central entrance

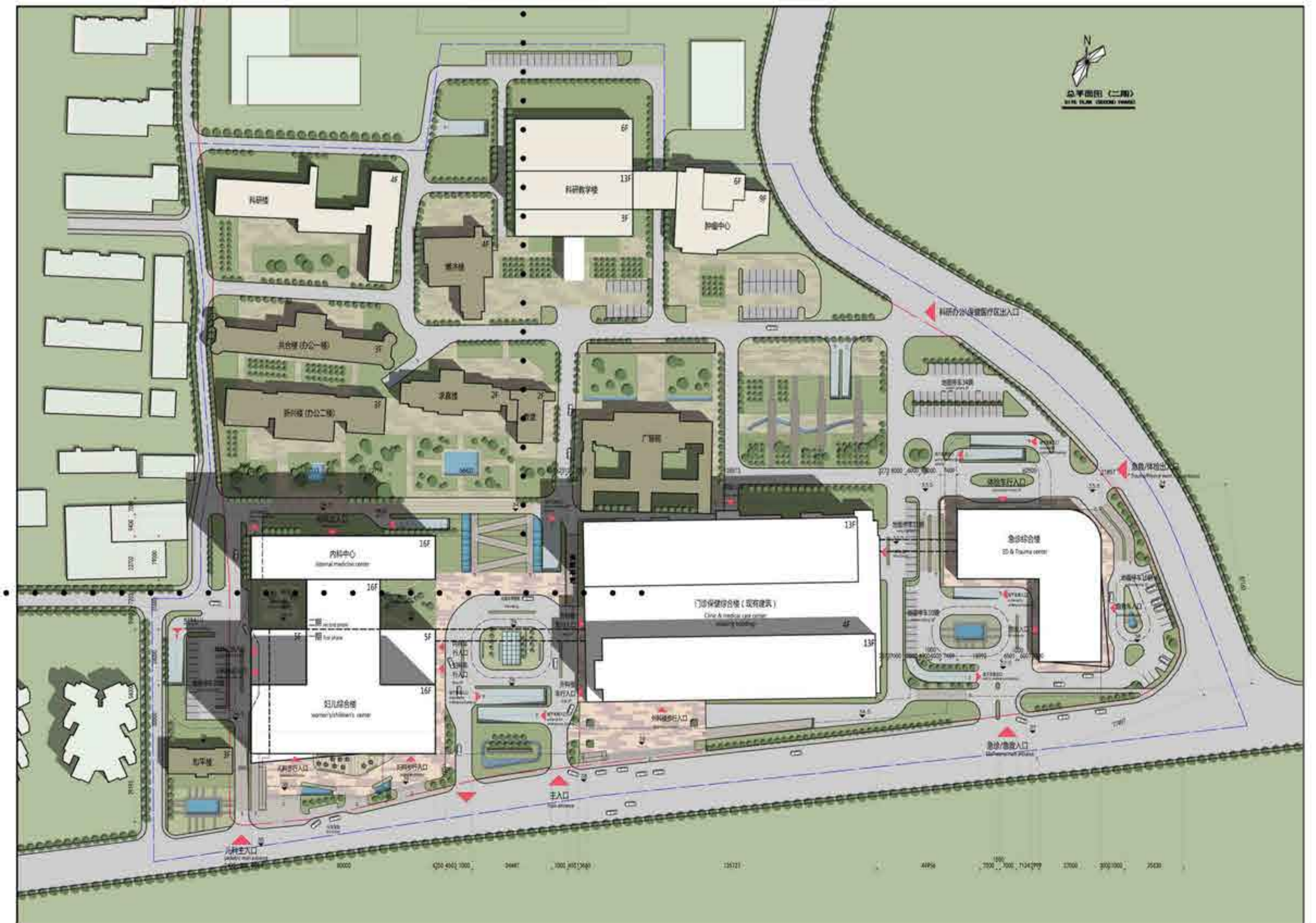


General entrance

Traffic flow line rendering



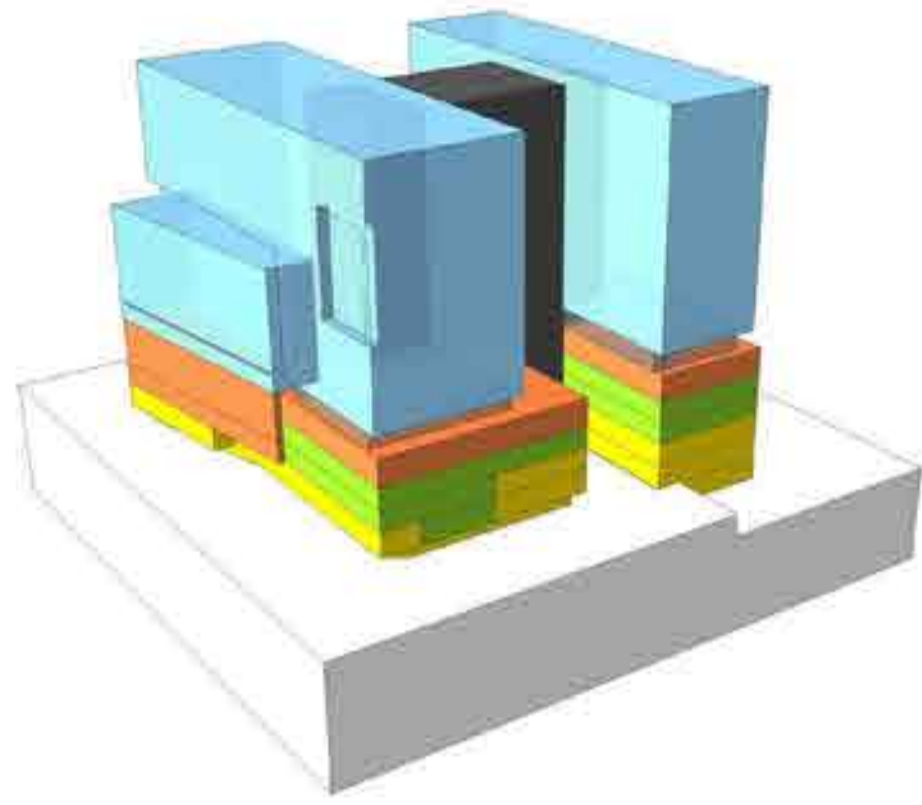
General plan of the hospital



Healthy Community Design

Part5: Qilu Hospital Planning and Design (2/2)

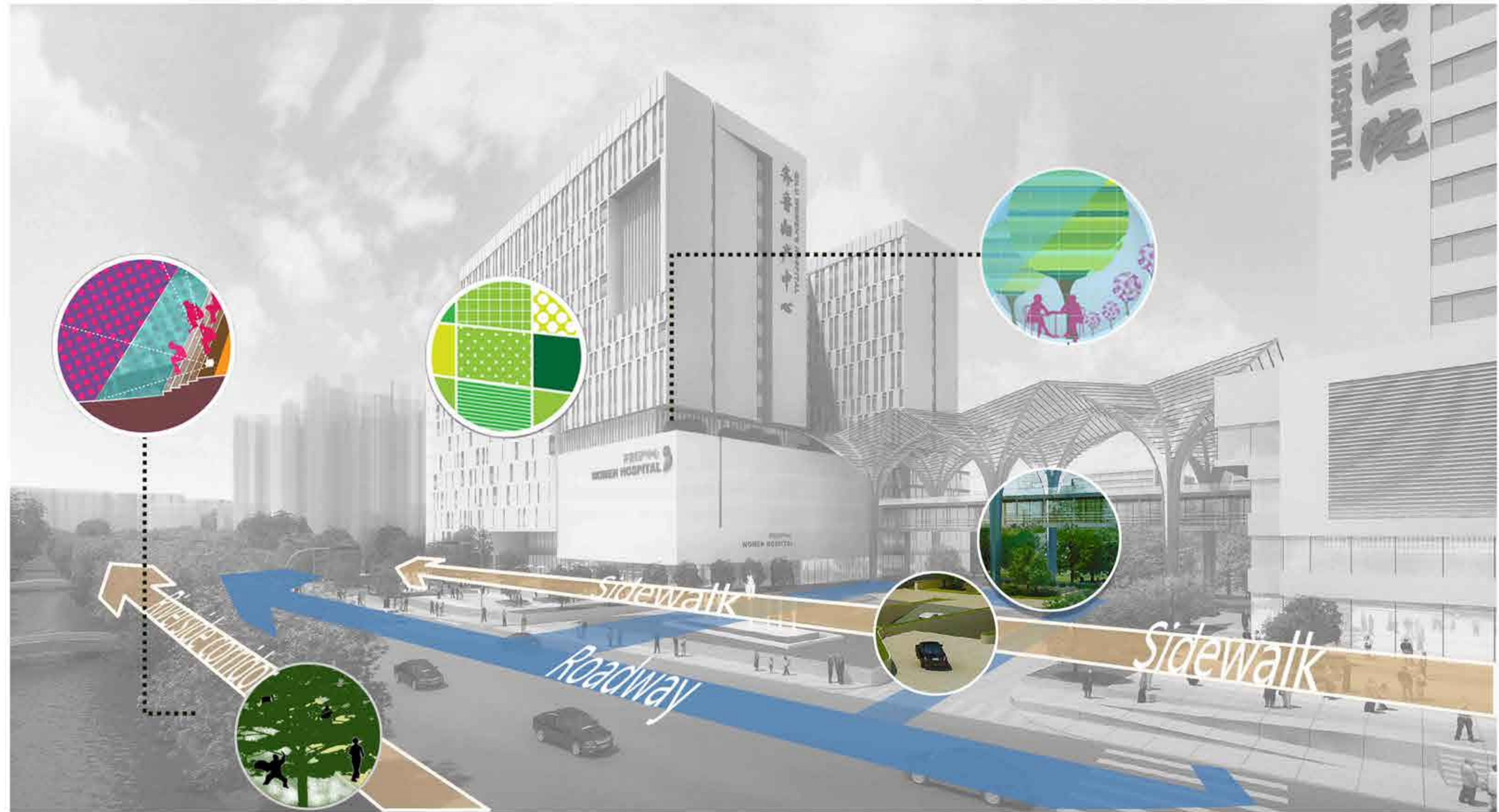
Three-dimensional structure of complex building



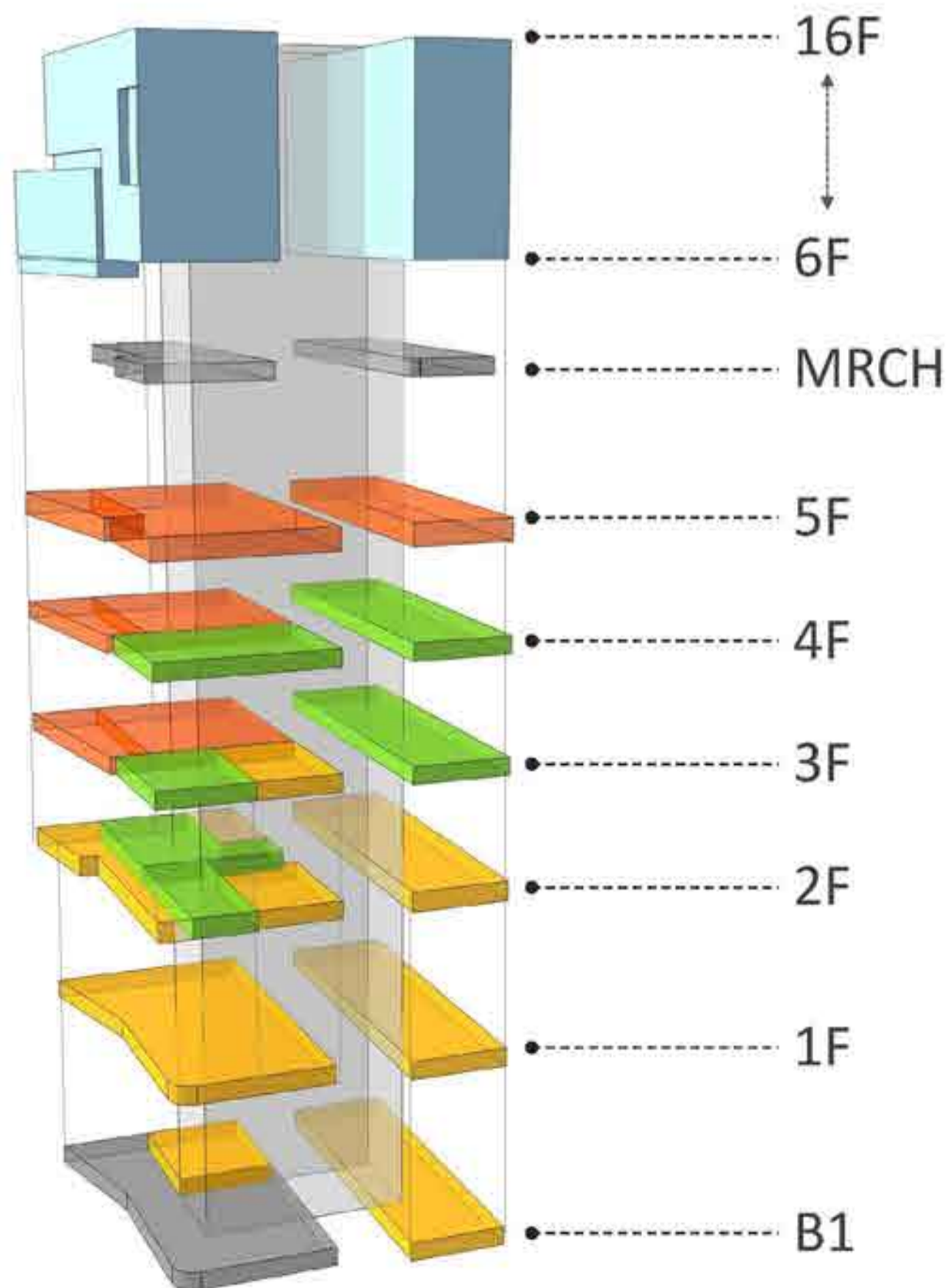
- 病房 INPATIENT
- 医技 D&T
- 门诊 OUTPATIENT
- 公共空间 PUBLIC SPACE
- 地下/机房 BASEMENT

Qilu Hospital of Shandong University is a hospital affiliated (managed) by the National Health Commission and a directly affiliated hospital of Shandong University, a key university directly under the Ministry of Education. The first batch of provincial joint construction of national regional medical centers (comprehensive) takes the lead and the main construction unit. In the 130 years since its establishment, the hospital has been adhering to the hospital spirit of "benefiting the public and seeking truth from broad wisdom", following the motto of "medicine morality and technical excellence", and has formed a complete discipline system and strong talents. The team and domestic advanced medical, teaching, and scientific research platforms enjoy a high reputation at home and abroad. A large number of critically ill patients in Jinan and even Shandong are treated every year. The comprehensive building is the most important and important building for receiving patients at this stage, and it plays an important role in guiding the flow of people in the graphic design.

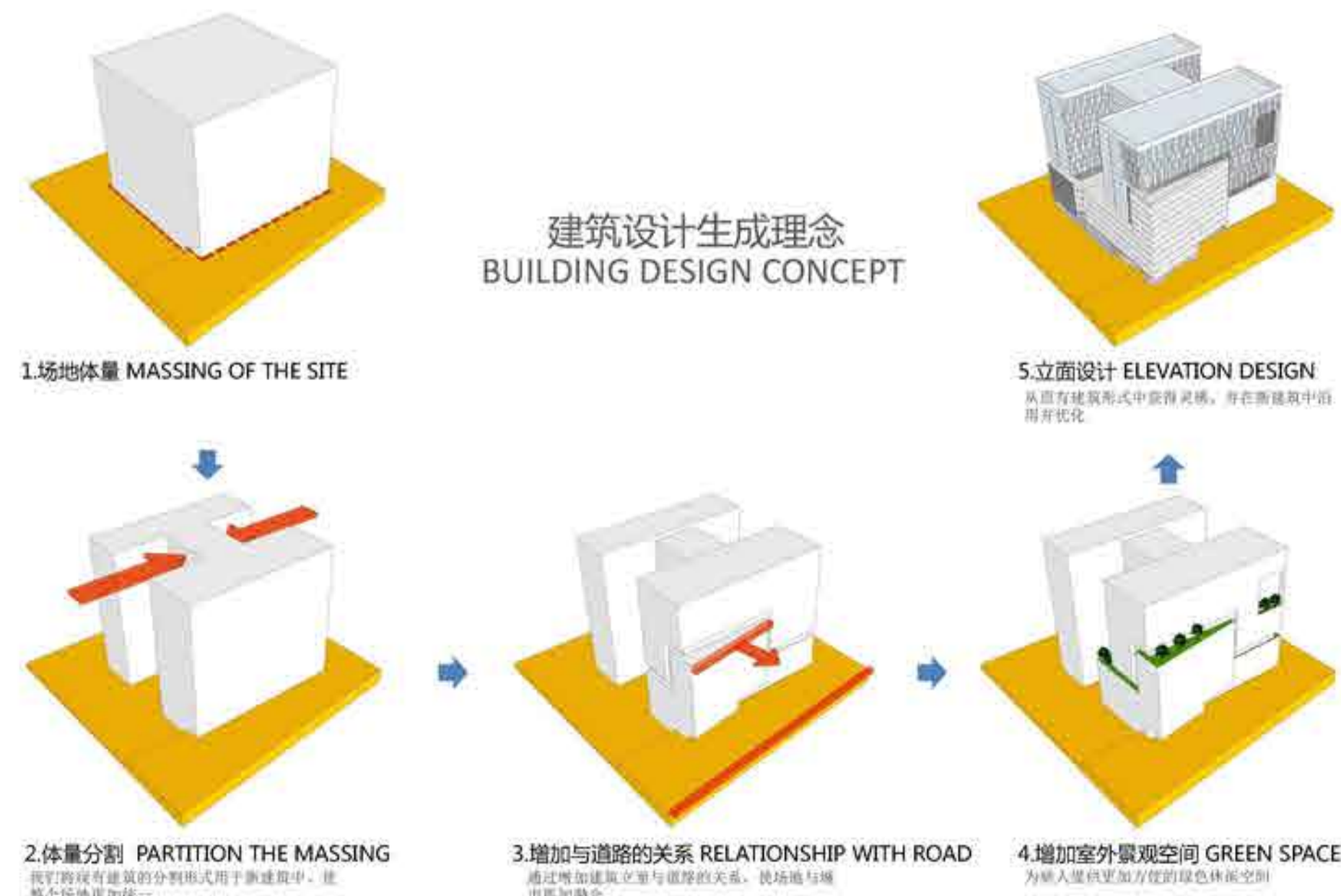
Building ecology



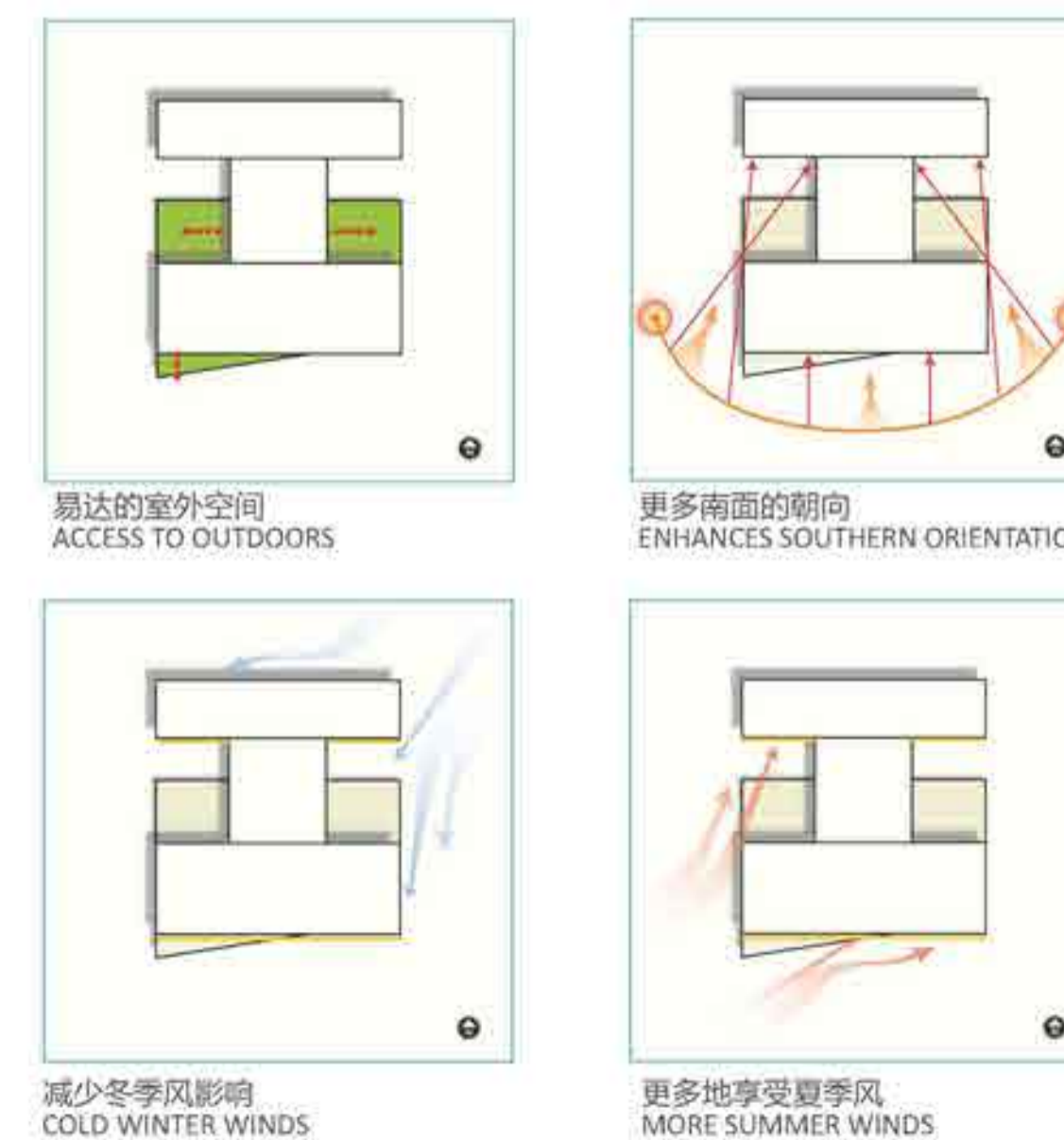
Floor distribution



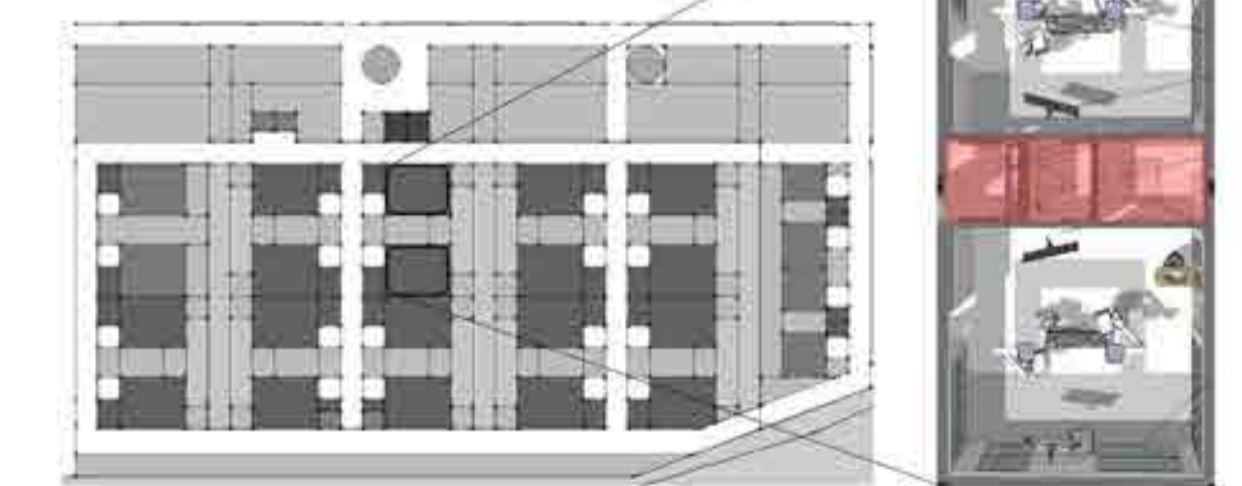
Design Concept



Influencing factors



Operating room design



Floor plan of the lobby of the complex building

